

## Instructions for accessing Pressnet Demonstration System on the Internet

### Install Java on your PC.

1. Copy the Java install file **j2re1\_3\_0-win.exe\*** found on the CD in the directory **D:\Software\Pressnet\Java** to a temporary directory on your PC (e.g. C:\windows\temp)
2. Run the **j2re1\_3\_0-win.exe\*** file to install Java.

### Make a Pressnet Directory

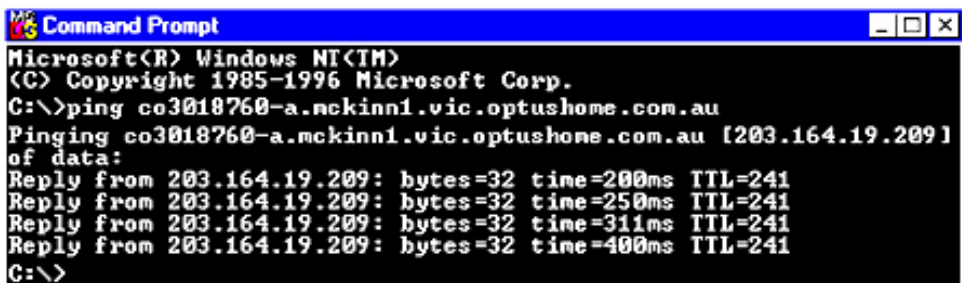
1. Make a new directory on your hard drive (we suggest **c:\IPressnet**)
2. Copy the Pressnet file **pressnet-0.9.1beta.jar** found on the CD in the **D:\Software\Pressnet\v101** into the new directory you created on the hard drive.

### Test Your Internet Connection, Obtain Demo IP Address

1. Connect to the internet in your normal way.
2. Obtain the IP address of our demo Pressnet by typing in the run box the following command;

**ping co3018760-a.mckinn1.vic.optushome.com.au**

[the ping command can be run from an MSDOS command prompt box]  
the command should return the Demo site IP address and look like;

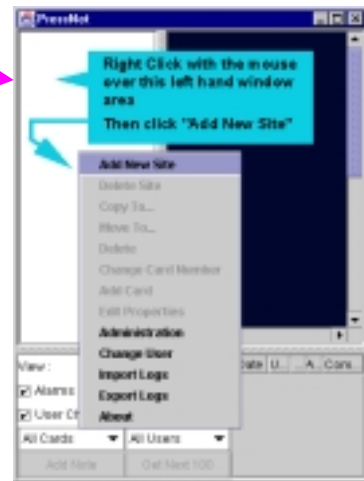


```
Microsoft(R) Windows NT(TM)
(C) Copyright 1985-1996 Microsoft Corp.
C:\>ping co3018760-a.mckinn1.vic.optushome.com.au
Pinging co3018760-a.mckinn1.vic.optushome.com.au [203.164.19.209]
of data:
Reply from 203.164.19.209: bytes=32 time=200ms TTL=241
Reply from 203.164.19.209: bytes=32 time=250ms TTL=241
Reply from 203.164.19.209: bytes=32 time=311ms TTL=241
Reply from 203.164.19.209: bytes=32 time=400ms TTL=241
C:\>
```

The number will be similar to 203.164.19.209

### Start Pressnet, Add Demo Site

1. Start Pressnet by double clicking the **Pressnet-0.9.1beta.jar** file in the **c:\IPressnet Directory**
2. Log in as administrator with a password of administrator
3. Once Pressnet Starts, position the mouse over the left hand window and add site as per the picture on the right



### Enter pnsServer details

1. Fill in the details as per this drawing using the IP address obtained (which may be the same or similar to 203.164.19.209)

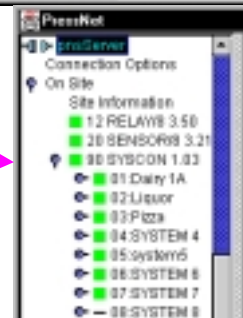


The screenshot shows the 'Add New Site' dialog box. The 'Protocol' is set to 'RMI'. The 'IP Address' field contains '203.164.19.209'. The 'Service Name' field contains 'pnsServer'. The 'Phone Number' field is empty. The 'Dial Up' checkbox is unchecked. There are 'OK' and 'Cancel' buttons at the bottom.

The service name will always be pnsServer and the protocol RMI.

### Log on to Demo Site

1. Double click pnsServer to make the connection
2. Double click on "On Site" to see the list of cards on the demo site



### Obtain Site Layout Map

1. Position mouse over Phasefale Australia map and right click to get options.
2. Choose Get Site Layout from Server  
Layout from server to import site layout map (this may take a few minutes depending on the speed of your connection but only needs to be imported once)

### Have fun and explore

Your done!

Now have a look around and check out the new software. Don't worry about messing up the site: we can fix it! Call us if you want some help!

