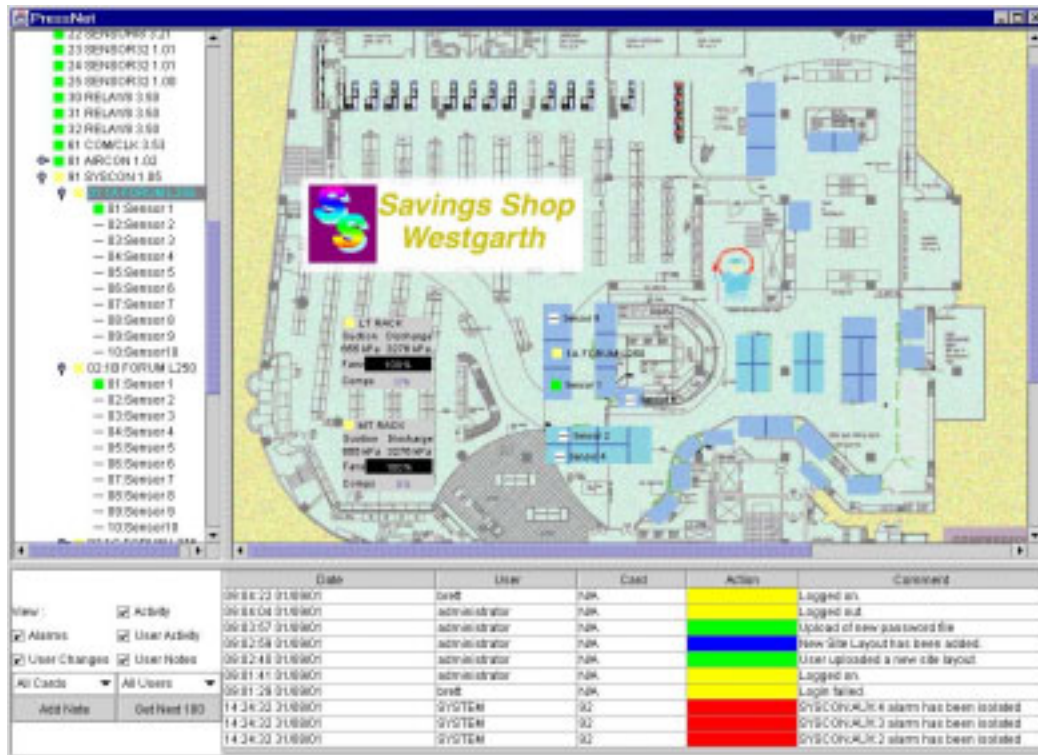


# Pressnet - Communications System for Presscon



## 1. Introduction.

Pressnet facilitates local and remote configuration and monitoring of the Presscon Control and monitoring system. Pressnet extends the features of a Presscon network by adding:

- The ability to retrieve historical data collected from any sensor point in the system at one-minute intervals. This data is available from the commissioning of Pressnet and spans years. Collection of the data is fully automatic as soon as the Pressnet system is started.
- Tools to allow fast and accurate navigation and analysis of data collected by Pressnet.
- The ability to remotely program and save settings of the Presscon controllers.
- Automatic event history logging which keeps track of what happened and "who changed what".
- Compatibility with all Presscon Systems – with full support for new Rack Control, Multi Rack control, System control (Syscon), Presscon Case control & Presscon DDC.
- Multiple concurrent users via On Site PC or remote access via dial up connection or Internet connection.

**Phasefale Pty. Ltd.**  
**36 Bulli Street**  
**Moorabbin VICTORIA AUSTRALIA 3189**  
**Tel +61 3 9553 0800 Fax +61 3 9553 3993 www.phasefale.com.au**

## Pressnet Communications for Presscon –Table of Contents

<b>1. INTRODUCTION.</b>	<b>1</b>
<b>1.1. ANATOMY OF THE PRESSNET SYSTEM.</b>	<b>3</b>
1.1.1. PRESSCON NETWORK	4
1.1.2. THE PRESSNET PC	4
1.1.3. THE PRESSNET SERVER SOFTWARE.	4
1.1.4. THE PRESSNET CLIENT SOFTWARE.	5
<b>2. INSTALLING &amp; RUNNING PRESSNET CLIENT ON A REMOTE ACCESS PC.</b>	<b>5</b>
<b>2.1. PC REQUIREMENTS.</b>	<b>5</b>
<b>2.2. WHERE DO I GET THE SOFTWARE/PROGRAMS ?</b>	<b>5</b>
<b>2.3. HOW DO I INSTALL JAVA ?</b>	<b>5</b>
2.3.1. INSTALLING JAVA FROM THE PHASEFALE CD	5
2.3.2. INSTALLING JAVA FROM THE WEB.	6
<b>2.4. HOW DO I INSTALL A PRESSNET CLIENT ?</b>	<b>6</b>
2.4.1. INSTALLING PRESSNET CLIENT FROM THE PHASEFALE CD.	6
2.4.2. INSTALLING PRESSNET CLIENT FROM THE WEB.	6
<b>2.5. SETTING UP A RUN ICON FOR PRESSNET</b>	<b>6</b>
<b>2.6. RUN (START) PRESSNET CLIENT</b>	<b>7</b>
<b>3. HINTS FOR USING THE PRESSNET CLIENT</b>	<b>7</b>
<b>3.1. SITE EXPLORER</b>	<b>8</b>
<b>3.2. SITE LAYOUT</b>	<b>8</b>
<b>3.3. EVENT LOGS</b>	<b>9</b>
<b>3.4. USING THE RIGHT CLICK BUTTON ON YOUR MOUSE</b>	<b>9</b>
<b>3.5. USER ACCESS LEVEL</b>	<b>9</b>
<b>4. GETTING STARTED WITH PRESSNET CLIENT: ADDING A SITE</b>	<b>10</b>
<b>4.1. OBTAIN THE SITE DETAILS</b>	<b>10</b>
<b>4.2. “ADD SITE”</b>	<b>10</b>
<b>4.3. DIAL UP CONNECTION ICON</b>	<b>10</b>
<b>5. CONNECTING TO A SITE</b>	<b>10</b>
<b>5.1. TO CONNECT TO A SITE WITH INTERNET CONNECTION</b>	<b>10</b>
<b>5.2. TESTING A CONNECTION TO A PRESSNET ON THE INTERNET</b>	<b>11</b>
<b>5.3. HELP! LOGIN FAILED BY SERVER</b>	<b>11</b>
5.3.1. CHANGE USER FROM WITHIN PRESSNET	11
<b>5.4. TO CONNECT TO A SITE WITH DIAL UP CONNECTION</b>	<b>11</b>
<b>5.5. HOW DO I KNOW WHEN I’M CONNECTED?</b>	<b>11</b>
<b>5.6. HOW DO I DISCONNECT FROM A SITE?</b>	<b>11</b>
5.6.1. CLOSE PRESSNET WITHOUT LOGGING OFF	12
5.6.2. CONNECT TO A DIFFERENT SITE IN THE SITE EXPLORER LIST	12
5.6.3. DISCONNECT FROM A SITE.	12
<b>6. USING PRESSNET CLIENT –SITE EXPLORER OPTIONS.</b>	<b>12</b>
<b>6.1. THE RIGHT CLICK MENU IN SITE EXPLORER</b>	<b>12</b>
<b>6.2. FUNCTIONS ACCESSIBLE IN SITE EXPLORER</b>	<b>12</b>
<b>6.3. EXPANDING AND COLLAPSING BRANCHES</b>	<b>15</b>
<b>6.4. MANAGING THE PASSWORD LIST IN SITE EXPLORER</b>	<b>16</b>
<b>6.5. CHANGING THE SITE ORDER IN SITE EXPLORER</b>	<b>16</b>
<b>6.6. SETTING THE HISTORY LOG LIMIT</b>	<b>16</b>
<b>6.7. IMPORT LOGS</b>	<b>16</b>
<b>6.8. PRESSNET VERSION NUMBER</b>	<b>16</b>
<b>6.9. ADD CARD</b>	<b>16</b>
<b>6.10. CHANGE CARD NUMBER</b>	<b>16</b>
<b>6.11. SITE INFORMATION BOX</b>	<b>17</b>
<b>7. USING PRESSNET CLIENT –HISTORY LOGS.</b>	<b>17</b>

<b>7.1. FUNCTIONS ACCESSED IN HISTORY LOGS</b>	<b>17</b>
<b>8. USING PRESSNET CLIENT –SITE LAYOUT.</b>	<b>18</b>
<b>8.1. EDIT FUNCTIONS ACCESSED IN SITE LAYOUT</b>	<b>19</b>
<b>8.2. USER FUNCTIONS ACCESSED IN SITE LAYOUT</b>	<b>20</b>
<b>8.3. SITE LAYOUT ICON COLORS</b>	<b>20</b>
<b>9. GRAPHING - UNLEASHING THE POWER OF PRESSNET</b>	<b>21</b>
<b>9.1. GRAPHING OPTIONS FROM AN OPEN GRAPH</b>	<b>22</b>
<b>9.2. USING COMPOSITE GRAPHS</b>	<b>24</b>
<b>10. EDIT PROPERTIES: PRESSCON SETTINGS SCREENS</b>	<b>25</b>
<b>10.1. RELAY CARD SETTINGS SCREENS</b>	<b>25</b>
<b>10.2. SYSCON PROGRAMMING SCREENS</b>	<b>26</b>
<b>10.3. MULTI RACK PROGRAMMING SCREENS</b>	<b>26</b>
<b>10.4. RACK CONTROL PROGRAMMING SCREENS</b>	<b>27</b>
<b>10.5. SUPERVISOR SETTING SCREENS</b>	<b>28</b>
<b>10.6. CASE CONTROL SETTINGS SCREENS</b>	<b>28</b>
<b>10.7. DDC PROGRAMMING SCREENS</b>	<b>29</b>
<b>10.8. 8 &amp; 32 CHANNEL SENSOR CARD SETTINGS SCREENS</b>	<b>29</b>
<b>11. FREQUENTLY ASKED QUESTIONS</b>	<b>30</b>
11.1.1. I AM STARTING OUT, HOW DOES IT ALL FIT TOGETHER?	30
11.1.2. WHAT SECURITY DOES PRESSNET HAVE?	30
11.1.3. I WANT TO CONNECT TO A SITE, WHAT DO I DO?	30
11.1.4. HOW DO I CONNECT TO A DIAL UP SITE?	30
11.1.5. HOW DO I CREATE A SITE ?	30
11.1.6. HOW DO I LOG IN ?	30
11.1.7. HOW DO I SETUP THE PASSWORD FILE ?	31
11.1.8. CAN I CHANGE THE ORDER OF SITES IN THE SITE EXPLORER?	31
11.1.9. HOW DO I ZOOM IN AND OUT OF THE GRAPHS ?	31
11.1.10. CAN I PLOT DATA FROM TO DIFFERENT CONTROLS AGAINST EACH OTHER?	31
11.1.11. WHAT IS A COMPOSITE GRAPH ?	31
11.1.12. HOW DO I USE COMPOSITE GRAPHS ?	31
11.1.13. HOW DO I PRINT A GRAPH TO MY PRINTER ?	31
11.1.14. CAN I SAVE THE GRAPH/CHART I'M LOOKING AT?	31
11.1.15. CAN I EXPORT THIS GRAPH/CHART TO EXCEL ?	31
11.1.16. HOW DO I SAVE OR EXPORT A GRAPH/CHART ?	31
11.1.17. HOW CAN I CHANGE THE SETTINGS FOR A CONTROLLER ?	32
11.1.18. ON SITE, OFF SITE. WHAT ARE THEY, HOW DO I USE THEM ?	32
11.1.19. WHAT IS SITE INFORMATION ?	32
11.1.20. HOW DO I SET UP THE SITE LAYOUT ?	32
11.1.21. HOW DO I DOWNLOAD THE SITE LAYOUT ?	32
11.1.22. HOW DO I CREATE/MODIFY A SITE LAYOUT ?	32
11.1.23. DO ALL PRESSNET CLIENT HAVE TO HAVE THE SAME SITE LAYOUT ?	32
11.1.24. WHAT ARE THE USER LEVELS?	33
11.1.25. CAN I MAKE SERVICE LOGS?	33
11.1.26. HOW DO I BEST MANAGE PASSWORDS AND SECURITY?	33
<b>12. INDEX</b>	<b>34</b>

## **1.1. Anatomy of the Pressnet system.**

There are four major components in the Pressnet system.

- **The Presscon network.** Presscon network provides control and alarm functions independent of Pressnet. Presscon continues to operate in the event that Pressnet stops or is disconnected. This document assumes that the reader is familiar with the components and features of Presscon.

- **Pressnet PC.** This is a computer connected directly to the Presscon System via PC Interface card (PR/PCI) fitted to the Pressnet Pc. The PC interface card is similar to a clock modem card. The PC usually has a monitor, keyboard and mouse but these are optional. The PC runs Linux operating system (a type of UNIX).
- **Pressnet Server Software.** This software continuously interrogates the Presscon system and **automatically** builds a picture of the network and all its settings as well as **automatically** logging all temperatures, pressure, humidity, etc.
- **Pressnet Client Software.** This is the graphical user interface software and can be run (concurrently) on both the Pressnet PC and other remote computers connected via a modem dial in or the Internet. All user interaction with Pressnet and Presscon is via the client software.

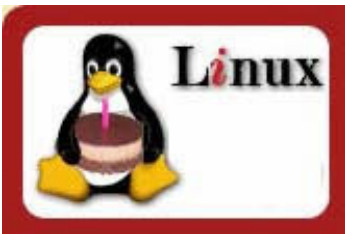
### 1.1.1. Presscon Network

Pressnet can be added to any Presscon System, either as a new installation or as a retrofit. The only change is that no data-logging card is required (although if there is one fitted it does not affect Pressnet operation). Older card types: Temperature Control, Defrost Control and Supervisor\* are shown by Pressnet but do not include any monitor or control functions. \* Limited support

### 1.1.2. The Pressnet PC

Is configured by Phasefale to customer or site specifications and usually includes;

- A Pentium Class computer with at least 128M RAM and 10G Hard Drive
- Linux operating System
- A Network card for connection to LAN/Internet using TCP/IP
- A Modem for dial in access using a dedicated phone line
- A Floppy disk drive (recessed and covered)
- A 15" Monitor (1024x768 Resolution minimum) \*
- A keyboard and mouse \*



- Pressnet Server Software
- Pressnet Client Software \*
- PC interface Card [ P/No. PR/PCI fitted inside the PC ]

\* On site machines which are not required to have the user interface do not need the items marked.

### 1.1.3. The Pressnet Server Software.

The Pressnet Server (referred to as "the server") plays a crucial role in the Pressnet system. This piece of software is designed to run continually so that it can monitor the Presscon network and "serve" requests from Pressnet Clients. Effectively the Pressnet Server acts as an interface for Pressnet Clients to a Presscon network. All logged data is managed by the Pressnet Server and any changes to setting requested by a Pressnet Client go through the server. In short it is the "guts" of Pressnet.

The computer that the Pressnet Server runs upon requires a connection to the Presscon, which allows it to monitor and log the activity of the Presscon system. It is important to note that the

Pressnet server does not provide any control functions, it does not control compressors, valves or relays. Presscon system will continue operating regardless of whether or not the computer is connected to the Presscon network, switched on or running the Pressnet server.

This same computer (that runs the Pressnet Server) provides facilities which allow other computers (running Pressnet Clients) to communicate with the Pressnet Server. This communication either takes place via a modem or through a computer network (which may or may not be connected to the internet).

In normal operation, the Server Software will be invisible to the user, all interaction will be via the client software.

#### **1.1.4. The Pressnet Client Software.**

The Pressnet Client ( referred to as "the client" ) provides us with a way to view what is or has occurred on a Presscon. Pressnet Clients do not have to run on the same computer as the Pressnet Server (although this is possible), they only require a means to communicate with a Pressnet Server. A single Pressnet Client has the ability to connect with several different Pressnet Servers. Pressnet Clients make requests to a Server so that it can display to you, the user, updated temperatures and pressures (updated every 20 seconds) and logged data (stored on the server). The Pressnet Client also allows you to change setting on controllers, once you tell the Pressnet Client to make this change, the client instructs the server to make the change on the Presscon controller.

Client software is written in Java, the advantage of this is the client software can be used on any computer capable of running Java.

## **2. Installing & Running Pressnet Client on a remote access PC.**

### **2.1. PC Requirements.**

The minimum requirements for a PC to run a Pressnet Client are:

- A Pentium 266MHz or faster processor. (*700+ Recommended*)
- At least 64 megabytes of physical RAM. (*128M + Recommended*)
- The PC should have 15 megabytes of hard disk space available.
- Access to the Pressnet PC via Internet or Modem dial up access
- A CD Rom Drive if installing Pressnet from Phasefale's CD Rom

### **2.2. Where do I get the software/programs ?**

Both Java (installed first) and the Pressnet Client software are supplied on the Phasefale CD.

*If you do not have the CD:*

Java can be downloaded from Sun website. See 2.2.1.1 for location.

The Pressnet Software can be downloaded from the Phasefale Web site (details follow)

### **2.3. How do I install Java ?**



#### **2.3.1. Installing Java from the Phasefale CD**

Open Windows explorer and double click on the file

D:\Software\Pressnet\java \j2re-1\_3\_0\_02-win-i.exe .

This will run the Java Runtime Environment installer, follow the instructions the installer provides. Choose the default options the installer presents you with.



### 2.3.2. Installing Java from the Web.

Go to Sun Java download page [Select the "one large bundle" option and click continue]

<http://www.java.sun.com/j2se/1.3/jre/download-windows.html>

It is a 8M download so will take some time.

*(The instructions are Sun Microsystems Installation Notes).*

If using Internet Explorer, you have both options below; if using Netscape Navigator TM , you have only the "Save As" option below.

- Open - This enables you to install the Java 2 Runtime Environment without leaving a compressed file on your hard disk.
- Save As - This saves the downloaded file without installing it. It will be saved at C:\ by default. Check that you have downloaded the entire file by comparing the size of the file you downloaded with the expected size:

Win32 Java 2 Runtime Environment for all locales (international):

j2re-1\_3\_0\_02-win-i.exe      7,757,744 bytes

After downloading this file, you can double-click on its icon to run the installer. Follow the instructions the installer provides. When done with the installation, to recover more disk space, delete the bundle you downloaded.

## 2.4. How do I install a Pressnet Client ?

### 2.4.1. Installing Pressnet Client from the Phasefale CD.



Create a Folder on your C Drive called "1Pressnet".  
Copy :

D:\Software\Pressnet\vers\Pressnet???.jar \*

[\* the version number may be indicated by the file name]

file from the Phasefale CD to the C:\1Pressnet directory you created.

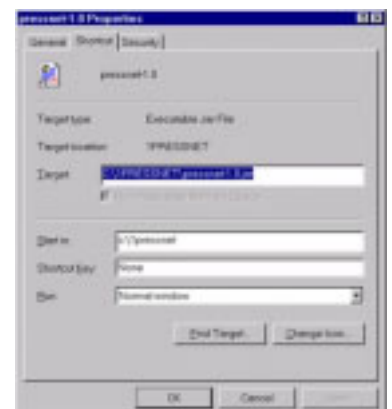


### 2.4.2. Installing Pressnet Client from the Web.

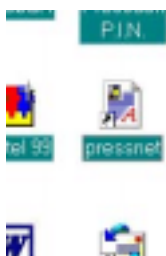
Create a Folder on your C Drive called "1Pressnet". Locate the file at:

<http://www.phasefale.com.au/pressnet>

and save it to the C:\1Pressnet directory you just created.



## 2.5. Setting up a run icon for Pressnet



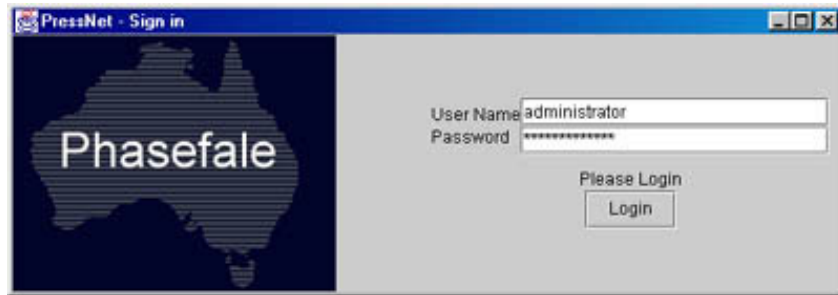
Using Windows explorer highlight the Pressnet???.jar \* file, right click and select "Send to.. Desktop(create shortcut)" [\* the version

number may be indicated by the file name]

Locate the newly created shortcut icon. Right click, select properties and enter “c:\1pressnet” in the “Start In” directory.

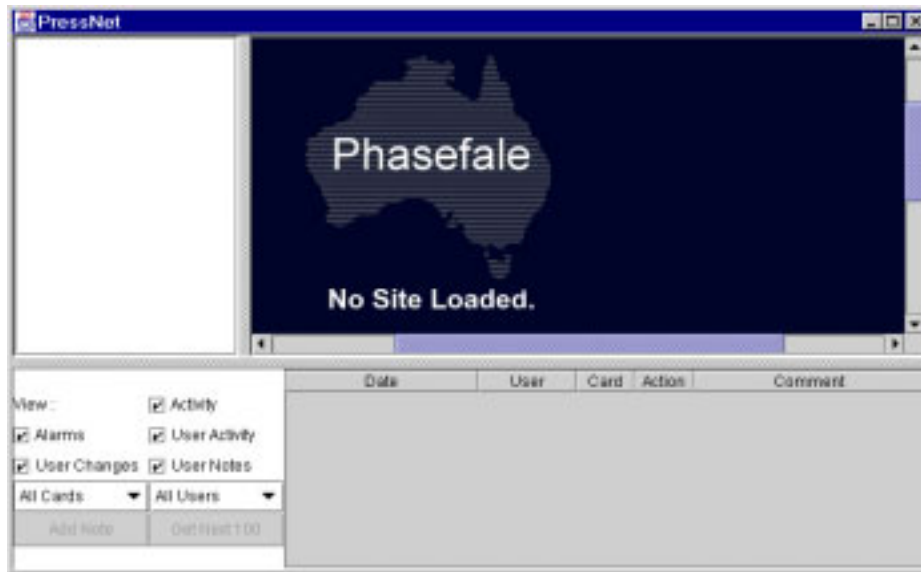
## **2.6. Run (start) Pressnet Client**

Double Click on the newly created Pressnet icon (on your Desktop) to start Pressnet. The first screen you see is the login screen;



Login with User Name **administrator**, password **administrator** to enter. [Note: Pressnet is CASE SENSITIVE]. Later you will add your own login details.

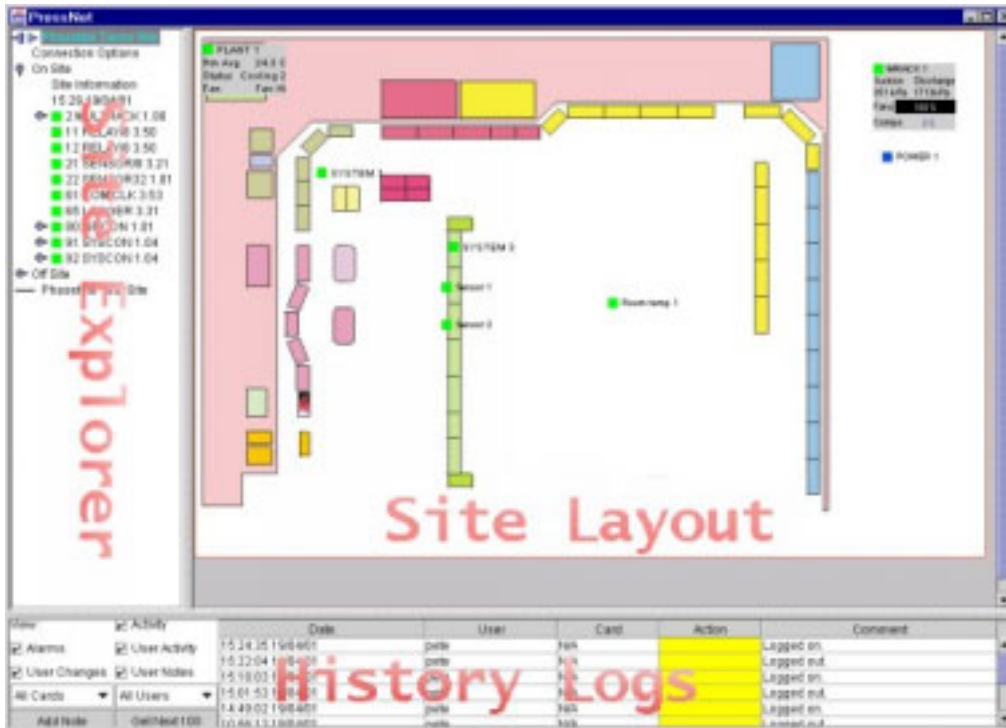
Next, you will see a Pressnet screen as follows; Congratulations! You have correctly installed and setup Pressnet. In the following chapters, you will learn to use Pressnet.



## **3. Hints for using the Pressnet Client**

Before we go into a lot of details, read this chapter to get an “overview” of the way Pressnet Client is designed to be used and some of its outstanding features.

Later, once you have setup site(s), Pressnet will look like the following;



There are three main areas of the screen: Site Explorer, Site Layout and History logs, each of which serves a different purpose. Importantly, you are able to RESIZE the windows to suit the actions you are undertaking and to have more screen area dedicated to the function, as shown



below.

### 3.1. Site Explorer

This is where sites are added, removed and listed. Each site can be expanded to show its complete list of controllers and card, connection details, on site and off site. If you don't have a site layout image loaded, you can navigate an entire site from here without needing to visit the site layout area.

### 3.2. Site Layout

This area serves to show the physical layout of the site and can include icons depicting temperatures, pressures, humidity and other Presscon elements. The icons are color coded, to aid in quick recognitions of their status: **GREEN** is OK, **AMBER** is defrost, **BLUE** is READ ONLY, **RED/YELLOW** flashing is ALARM, **PURPLE/WHITE** Flashing is ISOLATED. By moving the mouse over an icon, you will automatically obtain a "live" reading the element.



### 3.3. Event logs

This area lists all system activities, including Alarms, User & system Activities, User Notes, Setting Changes. The Activities are Color Coded for quick recognitions as follows

Color	Log Type	Notes
Red	Alarm	Alarm events (and "restorals" i.e. going out of alarm)
Amber	System Activity	Defrost initiation by a user, password changes, Pressnet Server reset and other non scheduled system activity
Blue	User Note	Users can add a note as a service tool
Yellow	User Login	Each time a user logs in or out, Pressnet automatically records the event and adds it to the history log
Green	User Change	Whenever someone changes a setting, the history log record the old and new setting along with the user. Only users with Master access and above can change settings

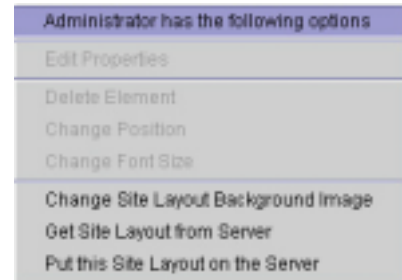
By clicking on a log, a small window will pop up and show all relevant information, as shown in the example at right.



### 3.4. Using the Right Click Button on your mouse

Many of the options in Pressnet are “context sensitive”, this means

some options are only available in certain screens. As you start using the client, click the right mouse button and an options menu will appear relevant to the area of the screen you are using. Some of the options will be shown in light grey, meaning they are not available, which could well indicate your current user level does not have access to the option, as discussed next.



In the example here, administrator cannot edit elements as none are selected.

### 3.5. User Access Level

There are 4 User access levels. To run Pressnet Client you MUST login with a valid username and password (even as viewer). Once you have started, you can change your user login.

Ranking	Name	Notes
1	Administrator	Highest level (system) access. Can access advanced system functions. Can update and override system passwords. Can add or remove Sites from the site tree. Can modify site layout (add graphic & icons). Can access all other settings changes parameters. Can change hardware settings (e.g. relay card assignments). Can change system parameters (e.g. Setpoint, time delays etc.). Can initiate defrost & reset compressor rack. Can add user note. Can view system hardware and control settings. Can view and construct graphs. Can view and sort history logs.
2	Supervisor	Can update and override system passwords. Can add or remove Sites from the site tree. Can modify site layout (add graphic & icons). Can access all other settings changes parameters. Can change hardware settings (e.g. relay card assignments). Can change system parameters (e.g. Setpoint, time delays etc.). Can initiate defrost & reset compressor rack. Can add user note. Can view system

		hardware and control settings. Can view and construct graphs. Can view and sort history logs.
3	Master	Can access all other settings changes parameters. Can change hardware settings (e.g. relay card assignments). Can change system parameters (e.g. Setpoint, time delays etc.). Can initiate defrost & reset compressor rack. Can add user note. Can view system hardware and control settings. Can view and construct graphs. Can view and sort history logs.
4	Viewer	Can view system hardware and control settings. Can view and construct graphs. Can view and sort history logs.

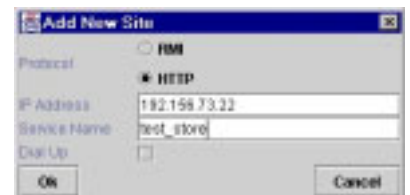
## 4. Getting started with Pressnet Client: adding a Site

Now that we have Pressnet installed, we will now add a site. This Chapter details how.

### 4.1. Obtain the Site Details

Before you add a site, you will need some information,

- IP address ( from ISP if internet connected site, or Phasefale for dial up site)
- Service Name (from the Pressnet Server on site)
- Phone number (if dial up connection)
- administrator password (if changed : usually administrator)



The Add new site dialog box. For Internet sites, enter the IP number, otherwise check the “Dial Up” box for Dial up sites

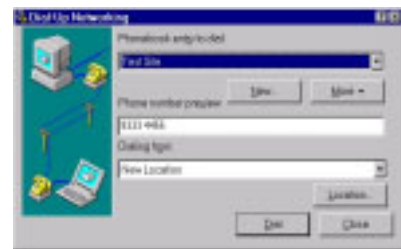
### 4.2. “Add Site”

Move the mouse to the Site Explorer area, right click to obtain the “add new site” option box as above and enter the details, the click OK.

The new site should now appear in the Site Explorer

### 4.3. Dial Up Connection icon

For dial up sites, you need to add an icon. Go to my computer, Dial up networking and add an item for dialing the site, similar to the box on the right. For the username use **pressnet** and password **mopressnet**



## 5. Connecting to a Site

### 5.1. To connect to a site with Internet connection

- First, connect to the internet in the way you normally would (this can be dial up to an ISP, or via a Local Area Network (LAN). If you are not sure if you are connected to the internet, run Internet Explorer and if you can browse the web you have connection
- Start Pressnet Client
- Move the mouse to the Site explorer area over the entry for the site you will connect to. Click (once) on the site you wish to connect to.

- Pressnet will provide a dialog bog to indicate the progress.

## 5.2. Testing a connection to a Pressnet on the internet

To check if you will be able to connect to your Pressnet System via the internet, the “Ping” command is very helpful. From the Start Button in Windows, select Run and enter; “Ping

194.156.178.56” , or “Ping

mystore.savingsbrand.com” (where 194.156.178.56 is the Internet number or

“mystore.savingsbrand.com” is the host name entry your ISP has assigned to the server). A reply indicates you CAN access the server, any other response indicates a problem.

```

C:\>ping 192.168.160.36
Pinging 192.168.160.36 with 32 bytes of data:
Reply from 192.168.160.36: bytes=32 time=41ms TTL=255
Reply from 192.168.160.36: bytes=32 time=37ms TTL=255
Reply from 192.168.160.36: bytes=32 time=43ms TTL=255
Reply from 192.168.160.36: bytes=32 time=38ms TTL=255
Ping statistics for 192.168.160.36:
    Packets: Sent = 4, Received = 4, Lost = 0 (0% loss),
    Approximate round trip times in milli-seconds:
        Minimum = 37ms, Maximum = 43ms, Average = 39ms

C:\>ping mail.phasefale.com.au
Pinging mail.phasefale.com.au [210.15.213.98] with 32 bytes of data:
Reply from 210.15.213.98: bytes=32 time=36ms TTL=241
Reply from 210.15.213.98: bytes=32 time=29ms TTL=241
Reply from 210.15.213.98: bytes=32 time=40ms TTL=241
Reply from 210.15.213.98: bytes=32 time=34ms TTL=241
Ping statistics for 210.15.213.98:
    Packets: Sent = 4, Received = 4, Lost = 0 (0% loss),
    Approximate round trip times in milli-seconds:
        Minimum = 29ms, Maximum = 40ms, Average = 34ms
    
```

## 5.3. Help! Login failed by server

If you get a message such as this, you may have the wrong user name and password (Login is case sensitive). It is possible that a user “Bob” on your PC is not setup on the Pressnet Server. You will then be prompted for a username/password, change user level as described next.



### 5.3.1. Change user from within Pressnet

You can change user in Site Explorer area at any time by right clicking and select the "Change user" option. Note that the user you enter here must be valid for the Pressnet Server PC. Once a valid username and password is entered, you will connect to the Pressnet Server.



## 5.4. To connect to a site with Dial Up connection

- Start Pressnet.
- Switch to dialup networking and double click the icon designated for this site. (there will be a separate icon for each dial up site). Once a connection is established;
- Switch back to Pressnet and Click (once) on the site you wish to connect to.
- The following message box will appear to remind you this is a dial up site
- Click “OK” to accept
- Click “Connect” in the Site Connection box which appears next.
- Pressnet will provide a dialog bog to indicate the progress.



## 5.5. How do I know when I'm connected?

In the site explorer list the server connection will show the plug moving open and closed to indicate data is being transferred. Also, If you expand the “on site” button, the server time and list of on site cards is shown.



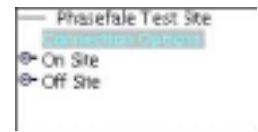
## 5.6. How do I disconnect from a site?

There are 3 ways to disconnect from a site. Pressnet automatically records

the disconnection.

### 5.6.1. Close Pressnet without logging off

Simply exit Pressnet Software by clicking on the top right hand corner cross.



### 5.6.2. Connect to a different site in the site explorer list

By clicking on a DIFFERENT site to the one you are currently connected to, you will be offered the option to disconnect from your current site.

### 5.6.3. Disconnect from a site.

- In the Site Explorer, double click on “Connection Options”
- Click Disconnect



## 6. Using Pressnet Client –Site Explorer Options.

Site explorer is primarily used to connect, disconnect and explore various sites. However it includes a lot more capabilities, mainly relating to site setup or “housekeeping” type of functions. You can also view all system status' as you can in the Site Layout.

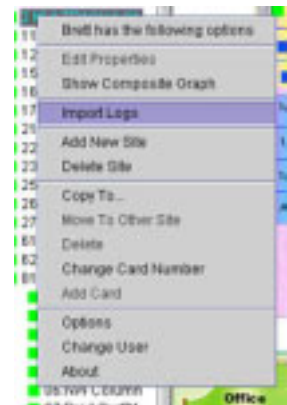
If you have already added a site to your Pressnet Client you will have used Site Explorer.

The Site Explorer is where you will spend a lot of time: anything you can do in the Site Layout area can be done in the Site Explorer. For fully operational sites, Site Layout adds a graphical representation of the layout which combined with the animated and colored icons makes it quicker to identify where system vents are occurring.

When you connect to a site in site explorer, the "On Site" list of cards is AUTOMATICALLY listed in the Pressnet Client Software so as to show you the arrangement of the Presscon System without further action required.

### 6.1. The Right Click Menu in Site Explorer

Many functions in Site Explorer are selected by moving the mouse over the panel and clicking the right mouse button. Depending on circumstances, certain menu options will be available, whereas other will be “grayed out” and not appropriate.



### 6.2. Functions accessible in Site Explorer

The following table lists the functions available in Site Explorer and how to access them. Note: some of the following functions require the appropriate access level to be available (for example a viewer level user cannot edit controller properties)

Function	Accessed by	See	Notes, function is used to.....
View list of active sites	A list of service names is in Site explorer		Check available sites
Scroll up/down Site Explorer	Use scroll bars on right hand edge of Site area		Scroll bars are provided in all areas to adjust viewed items
Add a Site	Right Click, select “add site”	4	Add sites to site Explorer. Some details of the site will be needed before this can be done.

*Pressnet Communications System for Presscon*

Delete Site	Right Click, select “delete site”	6.1	Remove a site from Site Explorer.
Connect to site	Single click on site name	5.1 ; 5.4	Connect to site. A dialog box will indicate progress.
Identify Cards, Channels in alarm, isolated, in defrost etc.	Against each card and channel a color coded icon identifies it status		The status information displayed in the Site Explorer is the same as that shown on the Site Layout screen.
Bring up a graph on a temperature or Pressure	Double click on the sensor icon. The graph automatically loads	9.1	The default graph is the current icon shown from 00:00 (midnight) of the current day. The Title shows full details of the point being graphed. A separate chapter covers the powerful graphing features. Graphs can also be initiated from the Site Layout.
Disconnect from site (1)	Shut down Pressnet	5.6.1	Logout from site.
Disconnect from site (2)	Disconnect from site	5.6.3	Logout from site.
Disconnect from site (3)	Connect to a different site	5.6.2	Logout from site.
Expand a site listing	Click again on the site name	5.5	Expand the site listing to Site Name, Connection Options, On Site and Off Site
Expand/Contract the On or Off Site tree	Click on the small wheel, or directly on "on/off site" entry	5.5	Show/Hide a complete list of Presscon Network Cards.
Expand the available channels of a controller	Click on the small wheel to the left of the control, or directly on the Channel.	5.5	Show/Hide a complete list available channels of the particular Presscon Network Cards. For a System Control it will list the 20 system channels plus 8 auxiliary channel. For a Multi-Rack controller it will show the 4 suction groups, 6 gas alarms, 4 power channels and 2 humidity channels.
Edit a controller channel – on site Controller	Right click over site controller for option menu, select “Edit Properties”	6.1	Access the full programming of the particular controller. The edit properties dialog box may have multiple tabs across the top to access different programming options.
Edit a controller channel – off site Controller	Right click over site controller for option menu, select “Edit Properties”	6.1	Access the full programming of the particular controller. The edit properties dialog box may have multiple tabs across the top to access different programming options. Cards NOT YET connected to the system can be programmed as off site cards and then settings transferred to on site cards
Change user level	Right click for the option menu, select “Change user level”	3.5 ; 5.3.1	Change user login. This may be required if you log into a site where your current user is not

**Pressnet Communications System for Presscon**

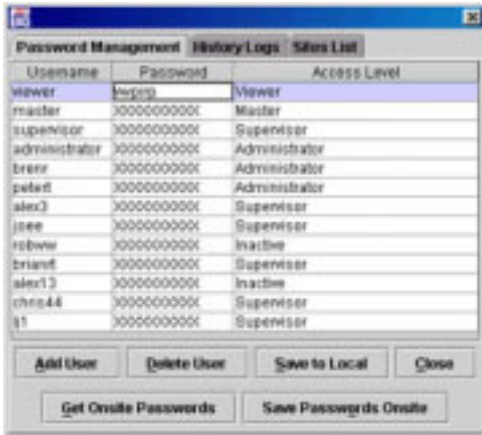
	“Change user”		recognized and you need to change to a different [authorized] user name.
Import Logs	Right click for the option menu, select “Import logs”	6.7	Copy the Data and history logs from the on site computer to a Pressnet Server for later viewing or storage
Copy an on site controller to off-site.	Click on on-site controller to be copied in site tree and select “Copy To” option	6.1	Allows a copy of a controller (Syscon, CaseCon , Rack-Con, Multi-Rack and DDC supported) to be saved to the off site computer. Allows a replacement controller to be programmed.
Copy an off site controller to on-site.	Click on off site controller to be copied in site tree and select “Copy To” option	6.1	Allows a copy of a controller (Syscon, CaseCon , Rack-Con, Multi-Rack and DDC supported) to be saved to the on site computer. Allows replacement controller to be programmed. <b>WARNING:</b> this over-writes controller program.
Access Site Information	Double click on “site information” under on site	6.11	View stored information on site such as Address, Date commissioned and notes
Check Site time and date	View time and date under on site	5.5	Pressnet Server time is displayed whenever site is connected
Edit & Check connection options	Double click connection options under service name	5.6.3	Edit (with Supervisor level access) & Check IP (internet) address, Service name, dial up status
Copy Site information to off site PC	Highlight on site “site information” right click and select “Copy To..”	6.1	Stores the Site information on the Pressnet Client. A warning box shows to the effect your local data is about to be over-written
Copy Off-Site information to on site PC	Highlight off site “site information” right click and select “Copy To..”	6.1	Stores the Site information on the Pressnet Server. A warning box shows to the effect site data is about to be over-written
Show composite graph	Right click for the option menu, select “Show Composite Graph”	6.1; 9.2	This graph is a construction from individual graphs
Move Controller to other site (from off site list)	Highlight (off site) controller, Right click for the option menu, select “Move controller”	6.1	Puts a copy of the current controller in another sites off site list. Only works with “off site” (saved) controllers. A selection list of current active sites is displayed.
Delete Card (from off site list)	Highlight (off site) controller, Right click for the option menu, select “Delete”	6.1	Delete controllers from the off site list. Cards cannot be deleted from the on site lists as they are cards found by Pressnet Server.
Change Card Number	Highlight card, Right click for the option menu, select “Change card Number”	6.10	Changing network card assignment (from 1-99) for both on-site and off site cards. <b>WARNING!</b> Changing card numbers can disable a functioning Presscon System! Use this function with caution.

Add Card (off site list)	Highlight off site, Right click for option menu, select "Add Card"	6.9	To add cards to the off site list. A card type and network assignment selection box appears. A complete site can be built up "off site" and then transferred to cards
<i>Password management:</i> view users	Right click for option menu, select "Options"	6.4, 11.1.26	A list of the current users and access levels is displayed (passwords are hidden). (requires Supervisor level access)
<i>Password management:</i> add users	Right click for option menu, select "Options", then Add user	6.4, 11.1.26	A new user can be added to the Password file (requires Supervisor level access)
<i>Password management:</i> delete user	Right click for option menu, select "Options", then Delete user	6.4, 11.1.26	A user can be deleted from the Password file (requires Supervisor level access)
<i>Password management:</i> Save to local	Right click for option menu, select "Options", then Save to Local	6.4, 11.1.26	An updated password file can be saved to the remote access Computer (requires Supervisor level access)
<i>Password management:</i> Save to Onsite	Right click for option menu, select "Options", then Save to Onsite	6.4, 11.1.26	An updated password file can be saved to the Pressnet Server (requires Supervisor level access)
<i>Password management:</i> Get On Site list	Right click for option menu, select "Options", then Get Onsite	6.4, 11.1.26	Retrieve the password file from the Pressnet Server (requires Supervisor level access)
<i>Password management:</i> Close dialog box	Right click for option menu, select "Options", then Close	6.4, 11.1.26	Hides the Password Management Dialog box. Note passwords are NOT automatically saved if this box is closed.
Set max number of History Logs	Right click for option menu, select "History logs" panel	6.6	Set the maximum number of history logs that can be viewed. (Default setting = 2500 logs). <i>Pressnet Server still stores all logs.</i>
Change order of Sites in the Site Explorer	Right click for option menu, select "Sites List" panel.	6.5	The order in which sites appear in Site Explorer can be changed by highlighting a site and using the up and down arrows to change its position in the tree. Changes must be "Saved"
Change User Level	Right click for option menu, select "Change User" panel.	5.3.1	A dialog box prompting for the new username and password appears, Press Login button one entered.
View Pressnet Version Number	Right click for option menu, select "About"	6.8	The Current Pressnet version number and Java version, plus other information is displayed. Click close to hide the box.

### **6.3. Expanding and Collapsing Branches**

In the site list, small wheels are used to indicate an item has more information which can be viewed. Click on the wheel to expand the item list (much like the cross in Windows explorer when looking at folders). See the picture Section 5.5

### 6.4. Managing the Password List in Site Explorer



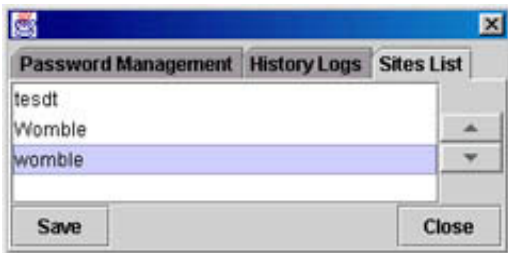
There is a password management dialog box from which you can edit and save the usernames and passwords. Access this dialog box by right clicking and selecting “Options”.

You can import a password file from the server ( “Get On Site Passwords”), edit that file by adding and deleting users, then save the file to the Server (“Save Passwords On Site”) and also to the local Pressnet Client (“Save to Local”).

It is possible therefore to have a different password file on your Pressnet Client to that on the Pressnet Server, so careful management of this essential security feature is important. Some recommendations are provided in FAQ

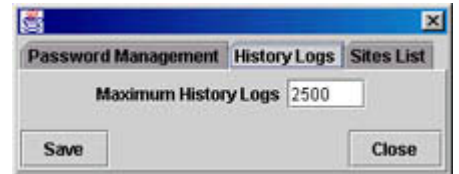
Section 11.1.26.

### 6.5. Changing the Site order in Site Explorer



You can order the sites in the list, access this dialog box by right clicking and selecting “Options”. Click on the “Sites List” tabs. Click on a site to select it, then use the up and down arrows on the right to move its position.

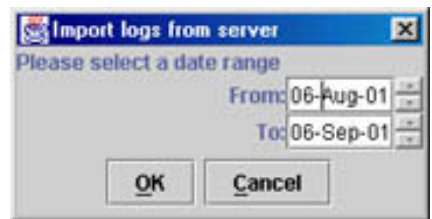
### 6.6. Setting the History log limit



You can set the on screen log limit, access this dialog box by right clicking and selecting “Options”. Click on the “History Logs” tabs. Edit the limit as required. Note that Pressnet Server itself will not limit the number of logs it stores.

### 6.7. Import Logs

You import data logs to the Pressnet client (for “off line” viewing of graphs), access this dialog box by right clicking and selecting “Import Logs”. Set the date range and click “OK” to start importing.



### 6.8. Pressnet Version Number

To obtain the current Presscon Version information, access this dialog box by right clicking and selecting “About”. Click “Close” to clear the box.

### 6.9. Add Card

To add a card to the Off site list, highlight “off site” and select add card. Choose the card type and network assignment and then click “Create” to add the card.



### 6.10. Change Card Number

Off Site and On Site cards can have their network assignments changed. Highlight the card to change and right click and select the





“Change Card Number” option. Warning! Be careful using this function as it can disable a functioning system!

### 6.11. Site Information Box

Can be edited and is an ideal repository for Site information.

## 7. Using Pressnet Client –History Logs.

Date	User	Card	Action	Comment
15:35:19 06/09/01	pete	91	Green	C_CUTIN Sys: 5 was changed to 0.1: old value was 0.0
15:32:56 06/09/01	pete	N/A	Blue	test comment
15:19:07 06/09/01	SYSTEM	91	Yellow	AUX 01:auxil 1 has has been isolated on Syscon 91.
15:18:29 06/09/01	External	N/A	Yellow	Server Started
15:12:25 06/09/01	SYSTEM	91	Red	Channel 01:1A FrozenFood has come out of alarm.
15:10:53 06/09/01	SYSTEM	91	Red	Channel 01:1A FrozenFood Sensor 03:1A3 IN ALARM! Above high temperature alarm p...
15:10:52 06/09/01	SYSTEM	91	Red	Channel 01:1A FrozenFood Sensor 02:1A2 IN ALARM! Above high temperature alarm p...

History logs is where you go to find out about what has occurred on the Presscon System. Pressnet AUTOMATICALLY records every significant system event considered to be an exception. Not surprisingly, a defrost is considered a normal and planned event, whereas an alarm is considered an exception or significant event therefore Pressnet will record all relevant details. Section 3.3 “Event logs” lists the 5 kinds of logs and their primary function, the following table is a more detailed account.

### 7.1. Functions accessed in History Logs

The following table lists examples of the kinds of logs History logs records.

Function	Accessed by	See Section	Notes, function is used to.....
View Logs in larger window	Dragging the window bar higher on the screen	3.1	Each of the 3 areas can be resized according to needs using the "drag" window bar function.
Scroll up/down History logs	Use scroll bars on right hand edge of log area	7	Scroll bars are provided in all areas to adjust viewed items.
View a log in a separate window	Click on the log in the Table.	3.3	The log is displayed in a separate dialog box with all relevant information. The box can be moved and resized, then Closed when no longer required.
Bring in more logs to table	Click on "Get Next 100" button	7	On initial connection to a site the last 10 logs are automatically listed. Each click adds 100 logs to the table, until the maximum is reached (system default is 2500 logs)
Sort Logs by date	Click on the Date column header	7	All viewed logs are sorted according to date. Most recent logs are at the top.
Sort Logs by User	Click on the User column header	7	All viewed logs are sorted according to user.
Sort Logs by Action	Click on the Action column header.	7	All viewed logs are sorted according to Action, in the order from top of User Changes (Green), User Logins (Yellow), Alarm (Red), User Note (Blue), System Activity (Amber)
Filter Logs by Card Number	Click "All Cards" Box, select card number required	7	Only logs which include a reference to that card are shown in the History Logs.

Filter Logs by User Name	Click "User" Box, select user name required	7	Only logs which include a reference to that user are shown in the History Logs.
Include/Exclude Alarms from History Log	Check/Uncheck "Alarms" option	7	Only those items with a tick against them in the options will be shown. By default on connection to a site all logs are shown.
Include/Exclude User Changes from History Log	Check/Uncheck " User Changes " option	7	Only those items with a tick against them in the options will be shown. By default on connection to a site all logs are shown.
Include/Exclude Activity from History Log	Check/Uncheck "Activity" option		Only those items with a tick against them in the options will be shown. By default on connection to a site all logs are shown.
Include/Exclude User Activity from History Log	Check/Uncheck "User Activity" option		Only those items with a tick against them in the options will be shown. By default on connection to a site all logs are shown.
Include/Exclude User Notes from History Log	Check/Uncheck "User Notes" option		Only those items with a tick against them in the options will be shown. By default on connection to a site all logs are shown.
Add a User Note	Click the "Add Note" box		A dialog box is displayed where you can type the message. Click OK to save or Cancel to discard. Pressnet will automatically record the username and date alongside the note. The note will appear in the logs in a minute or so after entry. User notes are a GREAT way to explain why settings have been changed and why, plus make for an excellent service tool. All users except Viewer can add notes.
Change the order of columns	Drag and Drop the column header to a new position.		The columns can be arranged in any order as required.
Change the width of columns	Drag bar between column header to adjust column width. *		The columns widths can be adjusted as required. ( * Similar procedure to adjusting column widths in spreadsheets like Excel )

## 8. Using Pressnet Client –Site Layout.

The Site Layout is the easy way to quickly identify the total system status at a glance. Color coded icons (green = ok, red flashing = Alarm +others ) quickly identify problem spots. The size of the site layout area can be adjusted ( see Section 3.1 Site Explorer ) as desired to show the full layout, or where the layout will not fit in the available area, you can click and hold the graphic to navigate the area OR use the scroll bars to the right and bottom of the Site Layout area.

Hovering over an icon brings up a summary notation which includes the card number, channel and sensor point plus the actual current reading. 91/01:1A FrozenFood first probe reading -15 C

The site layout can be edited on the Pressnet Client Software (i.e. adding a background image and status icons) and then saved to the Pressnet Server for storage. Once a Site Layout is on the Pressnet server, it can be loaded into any client software which can connect to the server.

Double clicking on the icon brings up a graph of the sensor plotted for the current day.

These simple and easy to use features are backed up by a host of more powerful and sophisticated features explained in the summary of functions below.

### **8.1. Edit Functions accessed in Site Layout**

The following table lists the editing functions available in Site Layout and how to access them.

Note: some of the following functions require the appropriate access level to be available (for example a viewer level user cannot edit controller properties).

<b>SITE LAYOUT EDIT FUNCTIONS – requires Supervisor, Administrator access</b>		
<b>Function</b>	<b>Accessed by</b>	<b>Notes, function is used to.....</b>
Add Store Graphic to the Site Layout or Change current Background	Right click in area, select "Change Background Image", select file	JPG & GIF graphic formats are supported. For best results in a 1024x 768 resolution monitor, the image should be 820 pixels Wide x 590 Pixels High, however any size can be used. Note Pressnet Client saves a copy of the selected file to its own location
Add a Syscon control status icon to the Site Layout (online mode)	Having connected to a site, Highlight the card & channel, drag across to the Site Layout	You will be prompted to nominate the points you require on the Site Layout. Check the sensor point you need and they will appear on the background image. From there you will need to fine-tune their placement over the image. For Single point systems (e.g. Cool rooms), you will not need to nominate a sensor, just the channel icon)
Add a Syscon control status icon to the Site Layout (off line mode)	Add the desired cards to the offline section of the Site Explorer , Highlight the card & channel, drag across to the Site Layout	You will be prompted to nominate the points you require on the Site Layout. Check the sensor point you need and they will appear on the background image. From there you will need to fine-tune their placement over the image.
Add a Rack Control status icon to the Site Layout (on line)	Having connected to a site, Highlight the card & channel, drag across to the Site Layout	A summary box will appear on the Site Layout, which shows the rack status, suction, discharge, % compressors running and % condenser fans running.
Add a Rack Control status icon to the Site Layout (off line)	Add the desired cards to the offline section of the Site Explorer, Highlight the card & channel, drag across to the Site Layout	A summary box will appear on the Site Layout, which shows the rack status, suction, discharge, % compressors running and % condenser fans running.
Move an icon (large distance)	Click and hold on the icon, then drag it to the new position	Great for moving the icons into their approximate position.
Move an icon (small distance)	Hover over the icon, right click and select "Change position"	A dialog box will appear with large and small arrows which allow you to position the icon with extreme accuracy. Great for moving the icons into their final position over cabinet outlines etc.
Change	Hover over the icon,	A selection box allows you to change from the default

(increase) the font size of an icon	right click and select "Change Font Size"	font size of 9. For sites where there are not a lot of points to clutter the screen, larger fonts are easier to read.
Delete an icon from the Site Layout	Hover over the icon, right click and select "Delete Element"	Delete unwanted icons.
Get Site layout from a Server	Right click in area, select "Get Site Layout from Server"	This will update a remote Pressnet Client to the Server layout, including the background image and all icons which have been added. This will over-rite any setup on the remote Pressnet Client
Put this Site Layout on the server	Right click in area, select "Put this Site Layout on the Server"	This will transfer the current Site Layout (as viewed on the screen) on to the Pressnet Server, including the background image and all icons which have been added. This will over-rite any setup on the Pressnet Server.

### **8.2. User Functions accessed in Site Layout**

The following table lists the user functions available in Site Layout and how to access them. Note: some of the following functions require the appropriate access level to be available (for example a viewer level user cannot edit sites).

<b>SITE LAYOUT USER FUNCTIONS</b>		
<b>Function</b>	<b>Accessed by</b>	<b>Notes, function is used to.....</b>
Identify Systems Status	Looking at on screen icon color.	The status information displayed in the Site Layout is the same as that shown on the Site Explorer screen.
Read an icon temperature, pressure or humidity etc.	Hover the mouse over the icon. After a few seconds the current reading is displayed.	A handy way to quickly obtain a temperature reading from a point. Due to the large number of points in a typical store, it is impractical to display temperatures for every point continuously.
Navigate the Site Graphic	1) Use the scroll bars to the right and	Show parts of the Site Layout in the window. This is handy if the History log area or Site Explorer has been enlarged.
Navigate the Site Graphic	2) Click in an area of where no icons are situated, then "drag" the graphic to a new area	Show parts of the Site Layout in the window. This is handy if the History log area or Site Explorer has been enlarged.
Bring up a graph on a temperature or Pressure	Double click on the icon. The graph automatically loads	The default graph is the current icon shown from 00:00 (midnight) of the current day. The Title show full details of the point being graphed. A separate chapter covers the powerful graphing features. Graphs can also be initiated from the Site Explorer.
Isolate/Restore an Alarm on Syscon	Right Click on the icon, edit properties, change Alarm ON to ISOLATE or vice versa	The alarm is isolated (restored). The on screen icon changes from red or green to Purple/White to indicate an isolated channel. History logs are generated.

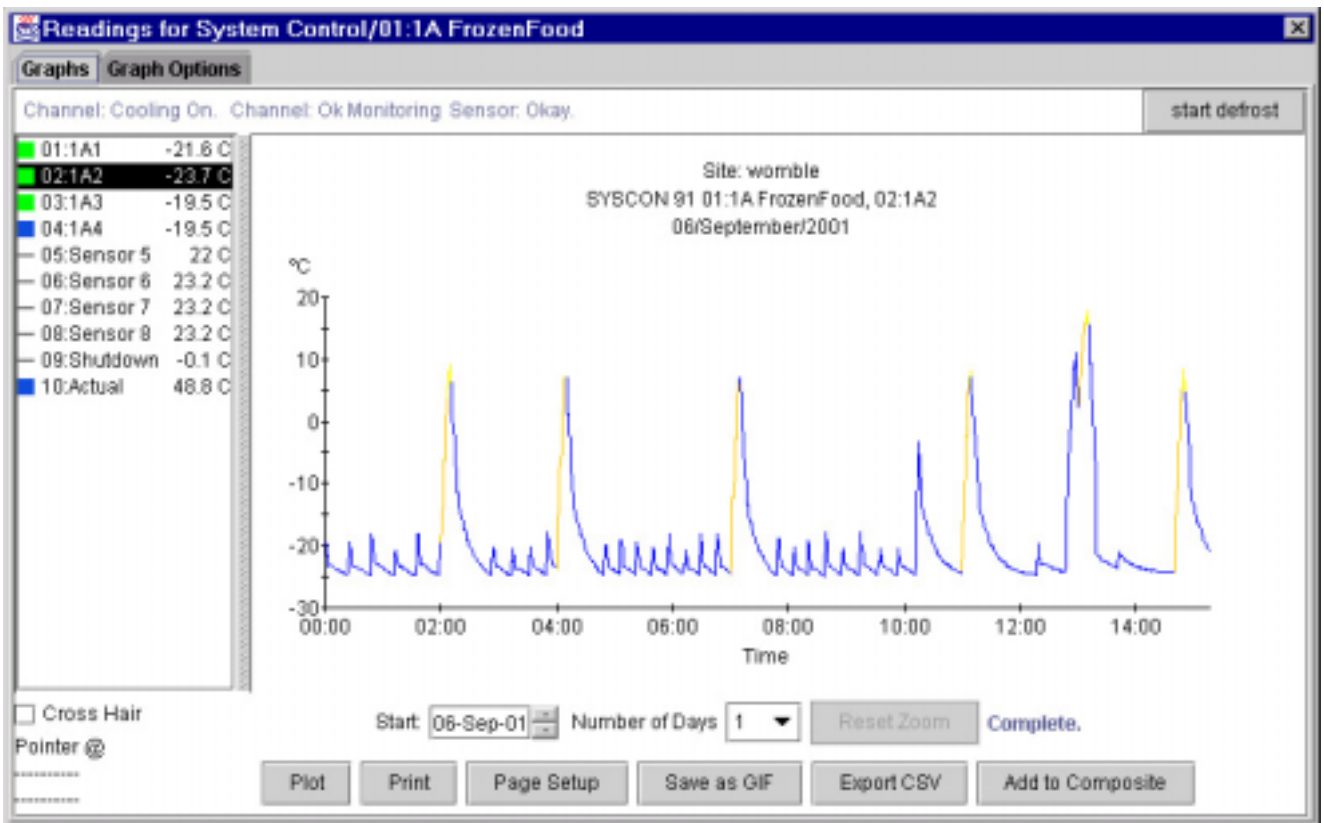
### **8.3. Site Layout Icon Colors**

For quick and easy recognition at a glance, beside each icon is a color-coded button to tell you the condition of the point. The icons update continuously.

Color(s)	Flashing?	Means	Notes
<b>RED /YELLOW</b>	Yes	Alarm	Alarm events are the highest priority
<b>PURPLE/WHITE</b>	Yes	Isolated Channel	Alarms from this channel has been suppressed.
<b>ORANGE</b>	No	Defrost	Channel is in Defrost
<b>YELLOW</b>	No	Fan Delay	Channel is in Fan delay. (Syscon or CaseCon only)
<b>GREEN</b> . green	No	Normal	Channel is within expected operating limits
<b>BLUE</b> . blue	No	Not used or Read only	A point which is provided as a read only (no control or alarm functions)
<b>WHITE/BLUE LINE</b>	No	Channel not used	The channel is currently turned off and not used

## 9. Graphing - Unleashing the Power of Pressnet

It doesn't get any better than this. So get ready for an exciting time, as Pressnet includes the most powerful graphing facilities available in any package for refrigeration and air conditioning. The graphing in Pressnet is truly outstanding- its fully automatic, is precise down to 0.1°C and 1 minute, and extends back in time to the commissioning of Pressnet Server.



In addition to these excellent specifications, Pressnet adds some very special features- color coded traces allow you to track the system STATUS as well as the parameters (normal condition is a blue trace, alarms are red and defrosts in shades of yellow), so diagnostics of system performance are

based on facts, not guess work. If you need, you can add program settings to the trace – for example cutin and cutout setting on a racks or alarm settings on a system control.

Need a graph which shows 10 days on a single page, dated 18 months ago? Pressnet can do it, with a precision of 1 minute over the full 10 days!

Do you need to see multiple types of readings in a single graph? No problem, Pressnet allows you to compare any parameter it can graph against others with a 10 trace limit. So knock yourself out: construct a graph with Power consumption, humidity, temperature, pressure, relay status and anything else you like!

As a final bonus, Pressnet has a unique function which allows product probe simulation. This option replaces costly and bulky product simulators with a sophisticated algorithm to simulate product temperatures to a high degree of accuracy using standard (low cost!) Phasefale M Probes.

This chapter shows you how.

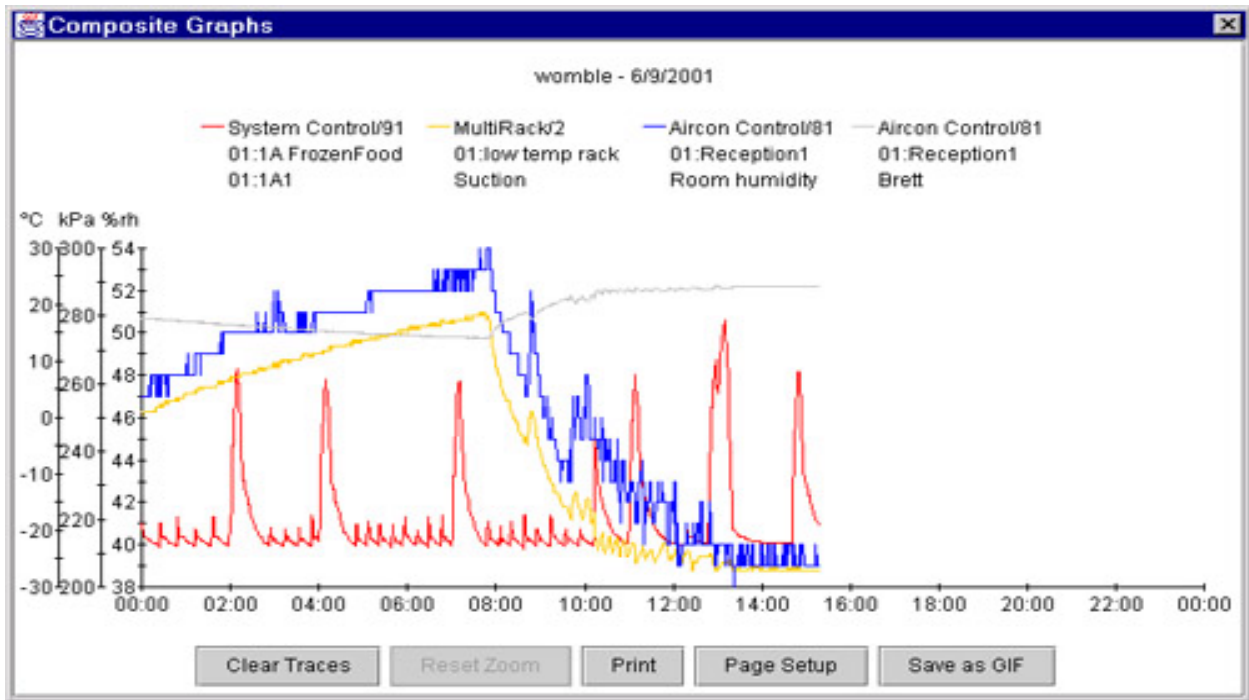
### **9.1. Graphing Options from an open graph**

Once you have a graph open (as in the picture above) many options are a mouse click away...

<b>Using Open Graphs</b>		
<b>Function</b>	<b>Accessed by</b>	<b>Notes, function is used to.....</b>
Select a different Sensor from Syscon Channel	Click once on any sensor,	The graph reloads to show the temperature of the chosen sensor
Select multiple sensors (from the same Syscon channel)	Hold the Control Key, and click on the sensors you want. When done, click the "Plot" button	The graph reloads with the chosen sensors all showing on a single page. Where temperature from a DIFFERENT channel are required on the same graph, the Composite Graph function is used.
Move the graph on screen	Click and hold on the top window bar and move the graph to a different area	The graph can be moved to the side for later use if needed
Resize the graph	Position the mouse over the bottom corner of the window, click and hold to resize	The graph can be sized according to needs, including almost full screen for zooming.
Show/Hide the Cross Hair	Check and uncheck the "Cross Hair" box	When on, The cross hair co-ordinates are displayed in the bottom left corner for precision readings
Plot a graph	Click the "Plot" button	To reload a graph at any time. Whilst loading, "loading" is displayed in placed of the "complete" message. Used after setting changes to the graph
View Graph information	See Channel status below Graphs tab, plus Graph legend	The status information includes full details of the channel and its current status when the graph is drawn.
Select a date	Adjust date in "Start" box. Press "Plot"	Any valid date can be entered. If data doesn't exist for the chosen date, a blank graph will result.
Select number	Click on the "Number	Set 1 to 10 days from start date to be loaded. As

of days	of days" box to adjust	more days are added, the loading will take longer. However the precision is still 1 minute so zooming is possible
"Zoom" in on a part of the graph	Position the mouse at one corner, click/hold and draw a box	On release of the mouse, Pressnet will redraw the graph showing the zoomed in area. Multiple zooms can be made.
"Unzoom" the graph	Click the "Reset Zoom" button	The graph will restore to the full day (or days) originally loaded.
Print a graph	Click the "Print" button	A printout of the graph will print. The print function uses the systems default printer settings
Page Setup for printer	Click on the "Page Setup" button	Allows adjustment of paper type (e.g. A4 or letter), orientation (portrait or landscape) and margins.
Save the Graph as a GIF	Click the "Save as GIF" and enter filename.	"Graphic Interchange Format" (GIF) Files are recognized by graphic programs, plus can be inserted into Word Documents and other programs.
Export Graph Data	Click on the "Export CSV" Button. Save to the desired location	Pressnet can export a "Comma Separated Variable" format which is recognized by spreadsheets so the data can be used for further analysis.
Add settings traces to the Graph	Select the "Graph Options" tab and check desired traces. Click "Update Now" to add	Depending on the controller, add " Cutin", "Cutout", "Alarm Hi/Low", "Defrost Termination" traces to the graph as indicators.
Start/Stop a Defrost (Syscon Channel)	Press the "Start Defrost" button	The channel will initiate or terminate a defrost (depending on its current status)
Close a Graph	Press the X in top right hand corner of graph	Graph will Close.

## 9.2. Using Composite Graphs



Composite Graphs allow you to construct a graph with multiple traces. The traces may be the same type of parameter (e.g. compare Suction pressures of 2 rack controllers) OR of different parameters – Pressnet is smart enough to add the trace (in a different color) and provide a scale for each trace.

Using Composite Graphs		
Function	Accessed by	Notes, function is used to.....
Start a Composite Graph	Construct a graph of one of the elements you want in the composite. Press "Add to Composite"	You can select the date range. Composite Graphs must be for a single day, so check "number of days" is 1. The composite graph is constructed as a different graph. To avoid confusion with colors, composite graphs do not contain status information
Close the current Graph and Composite Graph	Press the "X" close window at the top right of both graphs	The composite graph stays in memory, so for now we are closing both graph windows as we go to avoid clutter on the screen.
Generate a new graph to add to the composite	Select the new parameter and double click to show graph	Note if you have chosen a date OTHER than today's date, the graph must be updated to the same day as the composite you started with.
Add the new Graph to the composite	Press "Add to Composite"	The composite graph re-appears with the second trace included and an additional scale if the parameters are different.
Add additional traces to a Composite	Construct graphs and click "add to Composite"	The practical limit for Composite Graphs is about 8-10 different traces. After that the screen becomes too cluttered.
Page Setup for printer	Click on the "Page Setup" button	Allows adjustment of paper type (e.g. A4 or letter), orientation (portrait or landscape) and margins.



Print a Composite graph	Click the "Print" button	A printout of the graph will print. The print function uses the systems default printer settings
Zoom and Unzoom Composite graph	Draw a box around area to zoom, press "Reset Zoom" to restore full graph	Zoom and unzoom functions are the same as for the regular graphs.
Save the Composite Graph as a GIF	Click the "Save as GIF" and enter filename	"Graphic Interchange Format" (GIF) Files are recognized by graphic programs, plus can be inserted into Word Documents and other programs.
Clear the Composite Graph	Click the "Clear Traces" button.	The composite graph is again empty to allow you to construct a new Composite graph as required.
Close Composite Graph	Press the X in top right hand corner of graph	Graph will Close. However, unless the "Clear Traces" button was pressed, the Composite Data remains in memory for adding subsequent traces.

## 10. Edit Properties: Presscon Settings Screens

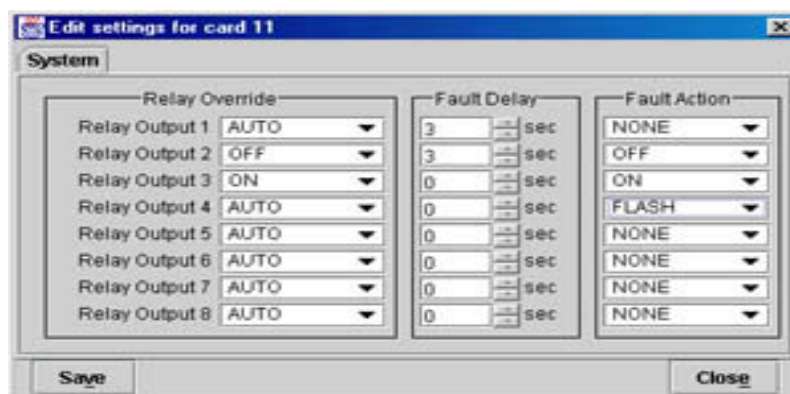
All the settings available in Presscon Controllers are available in Pressnet for supported controllers. This includes ( Syscon, Rack control, Multi Rack, Case Control and DDC), so it makes sense to program your Presscon this way. You are able to program the controllers off-site (i.e. from within Pressnet even though they are not connected), then transfer the program into an un-programmed controller.

Site Explorer Chapter 6.2 details the copy to and from options within Pressnet.

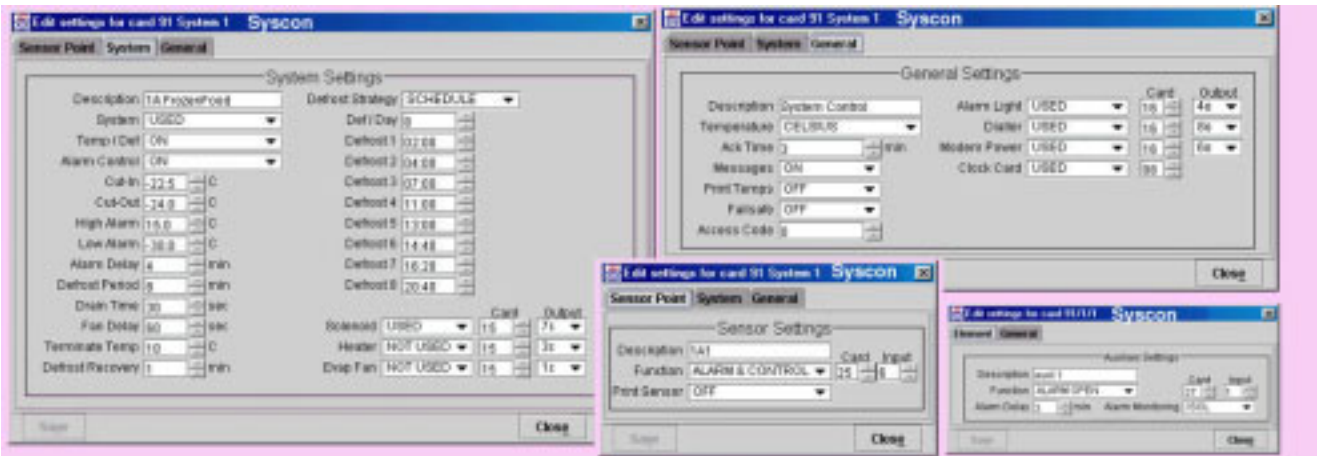
The following snapshots show the various controller programming screens for reference.

### 10.1. Relay Card Settings Screens

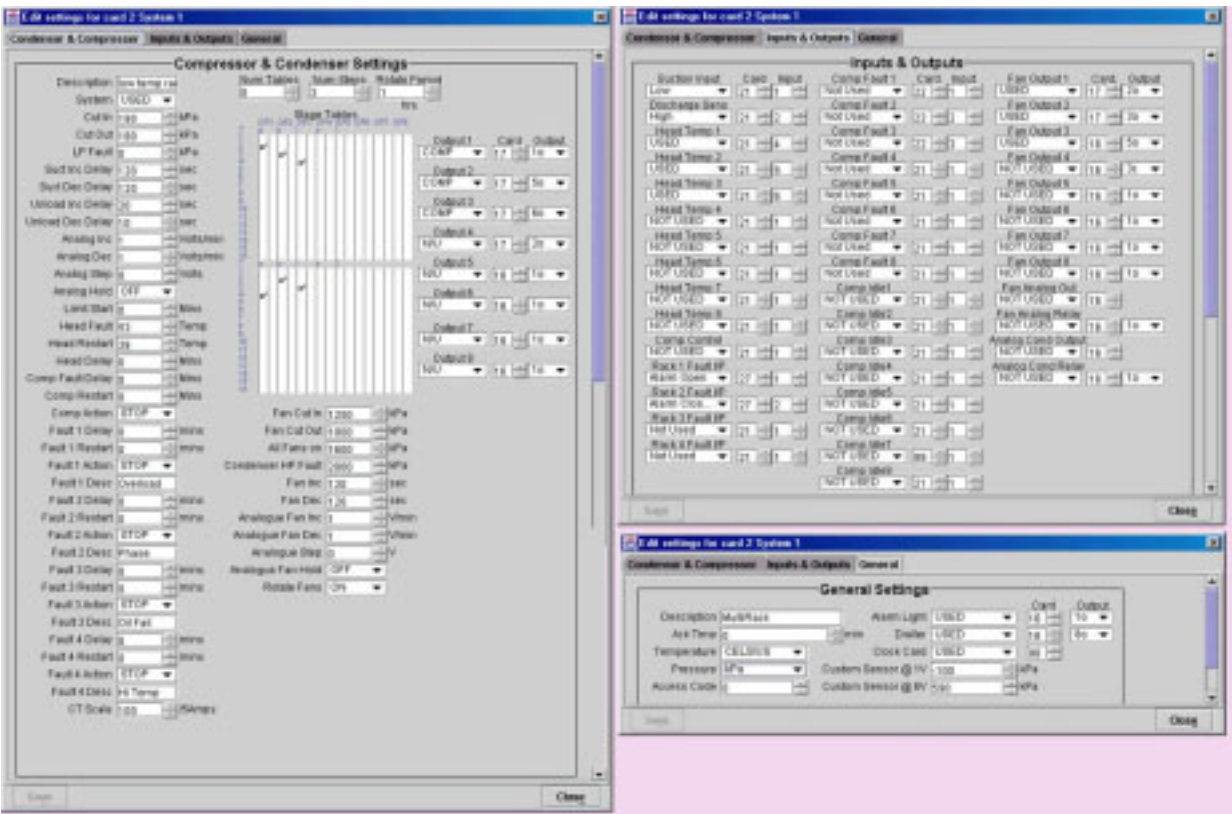
It is recommended that these settings are NOT changed from the defaults.



## 10.2. Syscon Programming Screens

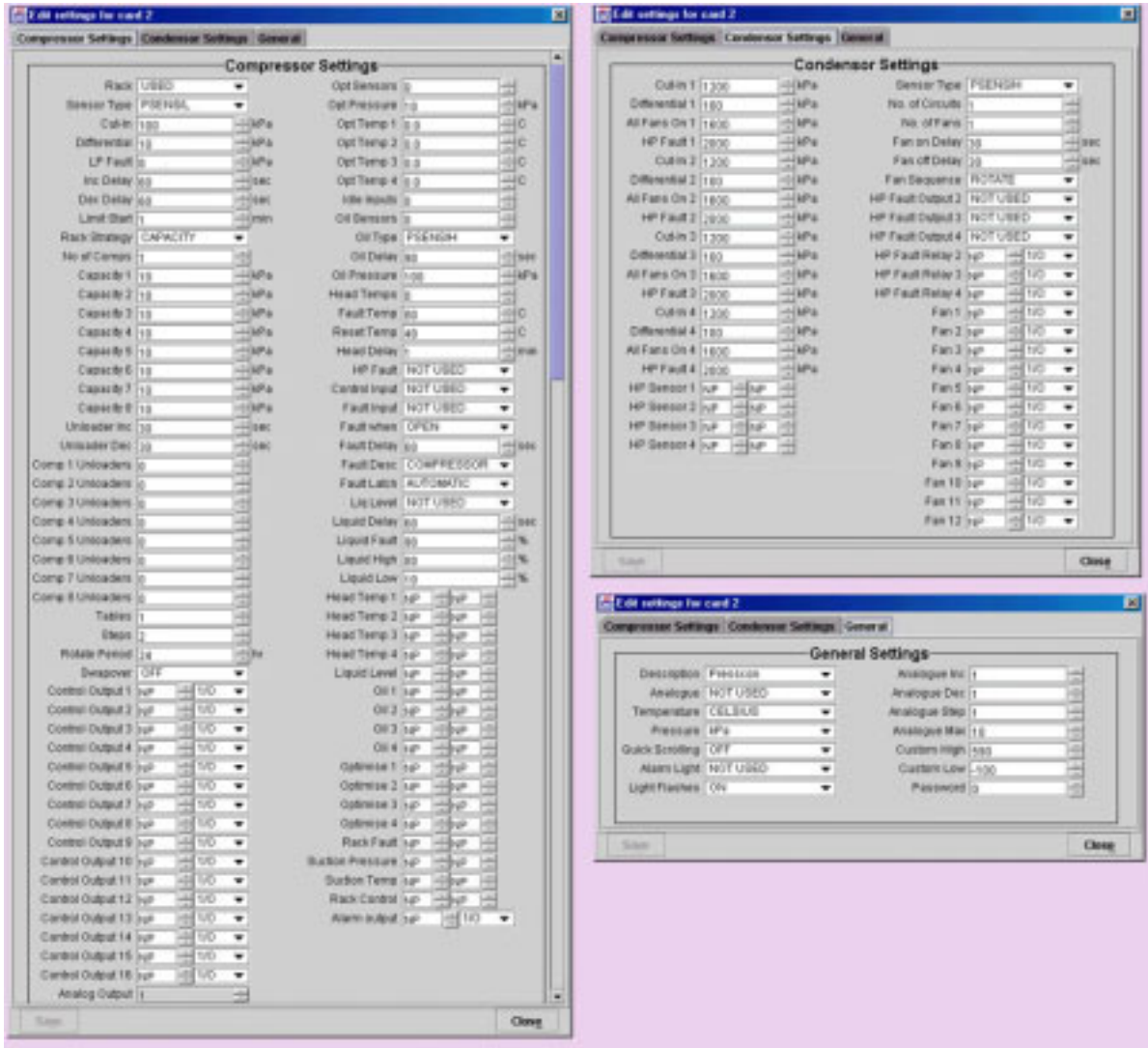


## 10.3. Multi Rack Programming Screens

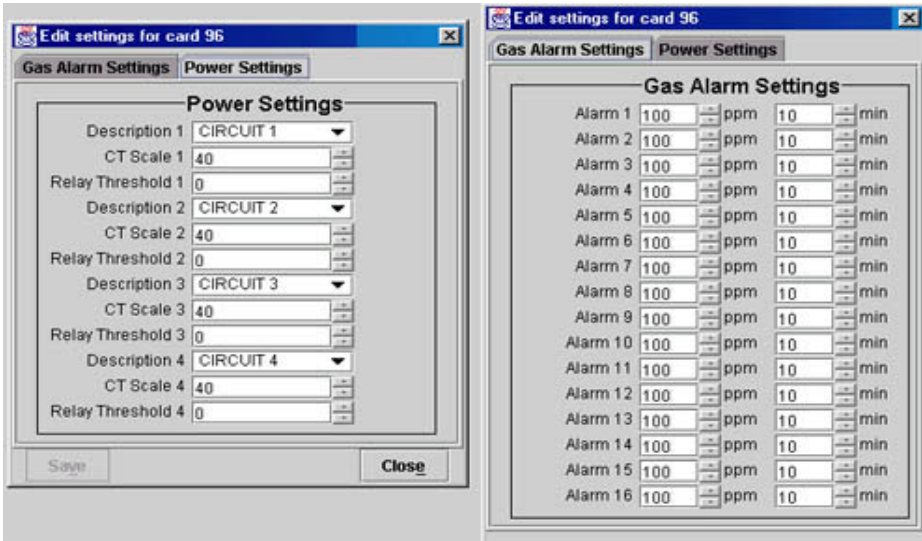


### 10.4. Rack Control Programming Screens

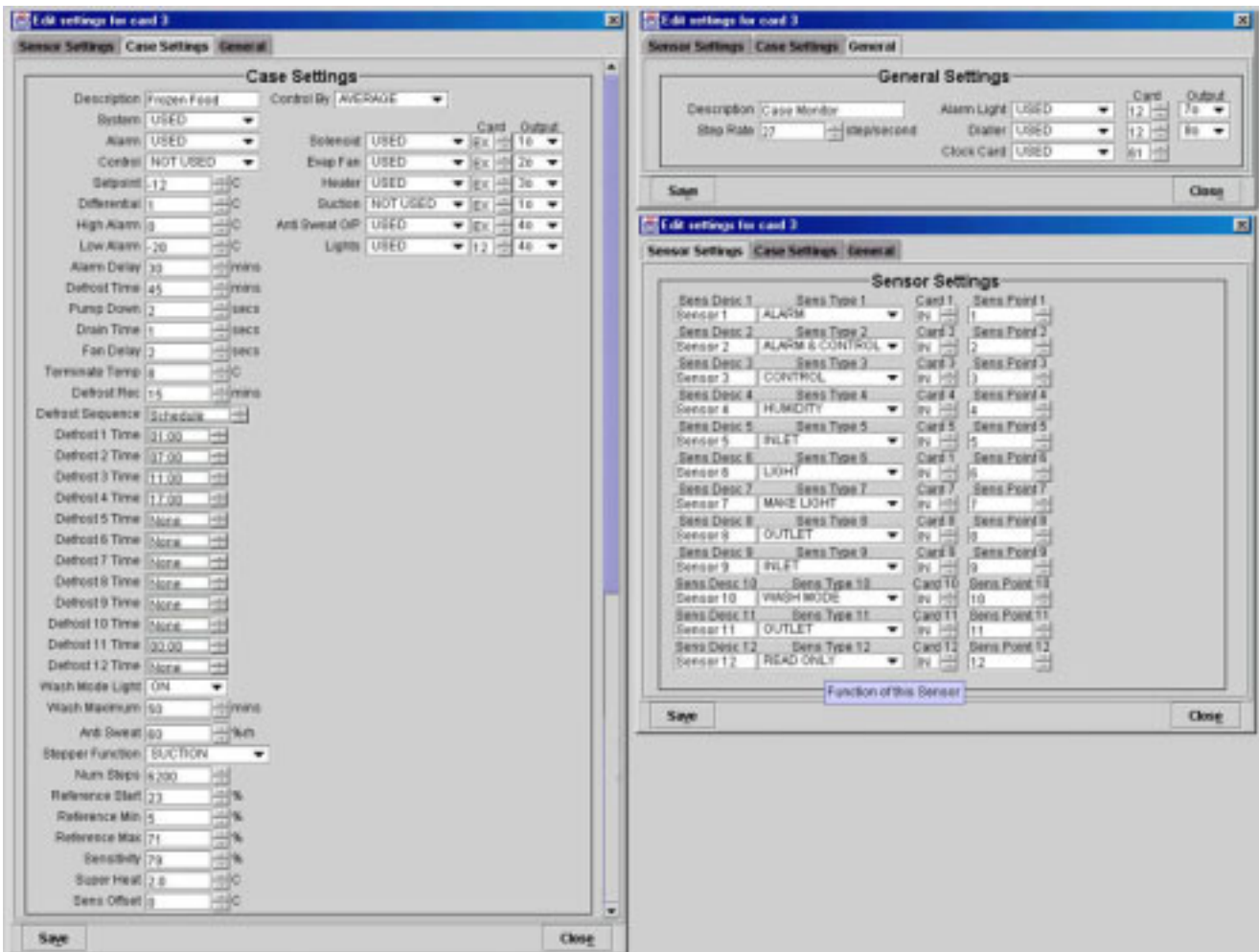
The programming is set across 3 screens, click on the Tab for "Compressor Settings", "Condenser Settings" or "General" to access the required screen.



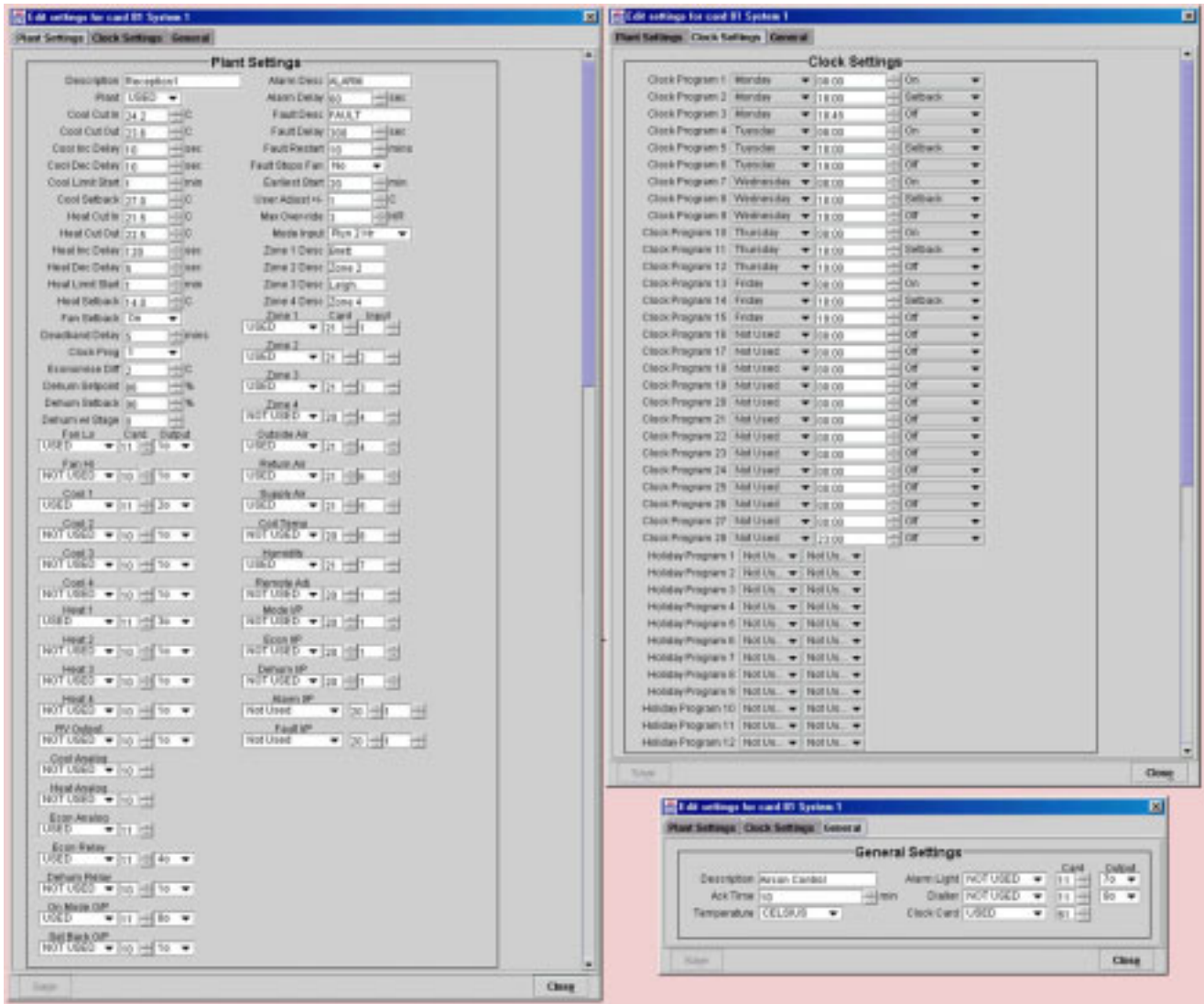
### 10.5. Supervisor Setting Screens



### 10.6. Case Control Settings Screens

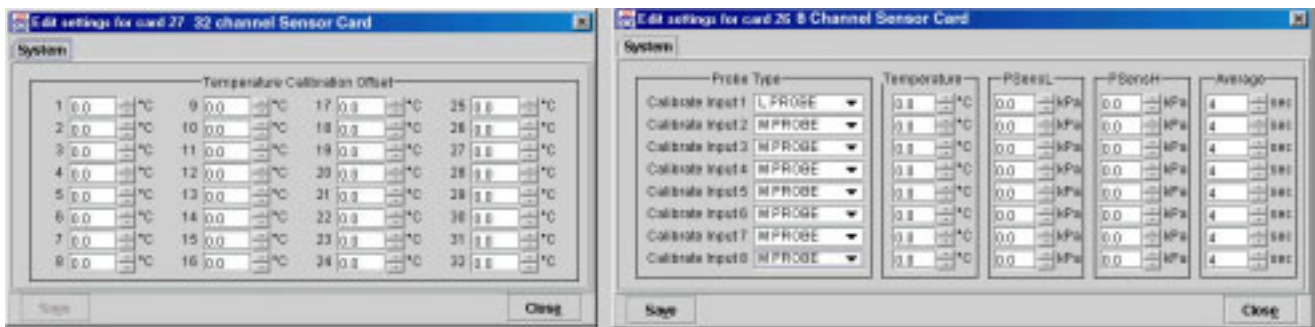


### 10.7. DDC Programming Screens



### 10.8. 8 & 32 Channel Sensor Card Settings Screens

It is recommended that these settings are NOT changed from the defaults.



## **11. Frequently Asked Questions**

### **11.1.1. I am Starting out, how does it all fit together?**

Well, that's a pretty big question! But we have attempted to answer this briefly in Chapter 3 "Hints for using the Pressnet Client" so please start there.

### **11.1.2. What Security does Pressnet have?**

In a word - Heaps. Pressnet security is covered by the use of encrypted passwords to prevent unauthorized access, and the communications over the internet and dial up is authenticated and in binary format for maximum security. There are also 4 levels of user access to ensure users can only make changes they are authorized for. Password files can be saved and copied so as to synchronize and maintain security on multiple sites.

### **11.1.3. I want to connect to a site, what do I do?**

For an Internet site, simply start Pressnet (you will need to supply a valid username and password) and click on the site name in the left hand panel (the Site Explorer panel). See Section 5.1 "To connect to a site with Internet connection".

### **11.1.4. How do I connect to a Dial Up Site?**

There is an additional step involved in connecting to a site that is accessed via a modem. Not surprisingly that step involves dialing the modem. When you create a dial up site (see 5.4 you create a dial up networking profile. This profile must be activated before the connection can be properly established. In fact the Pressnet Client will prompt you to establish the connection in the process of connecting to the desired site.

After you acknowledge this, by clicking the "OK" button the prompt will disappear and the Pressnet Client will not do anything more to connect to the site. At this point you should minimize the Pressnet client and go to Windows dial up networking and activate the appropriate Dial Up Networking profile for the site you wish to connect to. Once you have done this its time to return to the Pressnet Client and continue the connection process. Since you have already selected to the site but no connection to the site has been established the Pressnet Client is in offline mode (see 11.1.18 On site, Off site. What are they, How do I use them ?) with the selected site. To make the client go online with the site you must bring up "Connection Options" by double clicking on it. This will bring up a dialog box from where you click on "Connect" button to establish the Pressnet Clients connection with the dial up site.

### **11.1.5. How do I create a site ?**

Another big question! Best answered by reading Chapter 4 "Getting started with Pressnet Client: adding a Site".

### **11.1.6. How do I log in ?**

You log in to Pressnet when you start it by supplying a username and password. If you connect to a site Pressnet uses the same Username to connect to that site.

### **11.1.7. How do I setup the password file ?**

There is a password file on your Pressnet Client software and also a password file on the Pressnet server. A dialog box ( see Section 6.4 "Managing the Password List in Site Explorer") has options for loading the password file (from the local Pressnet Client OR from the Server), then editing the user list, and finally SAVING the changed password file (to either or BOTH the local Pressnet Client and to the Server).

It is therefore important that a clear policy is adopted to and adhered to ensure the password files are both up to date on all machines, and managed correctly so as users gain access at the right level. Pressnet gives you the tools to achieve a high level of security.

### **11.1.8. Can I change the order of sites in the Site Explorer?**

Yes. Section 6.5 " Changing the Site order in Site Explorer " shows you how to do this.

### **11.1.9. How do I zoom in and out of the graphs ?**

Easy. With the mouse over one corner of where you need to Zoom, press the left mouse button and then draw the box to cover the area you want to zoom in to. Release the mouse button when done and the graph redraws in the chosen area. See Section 9.1 "Graphing Options from an open graph" for more details.

### **11.1.10. Can I plot data from to different controls against each other?**

Yes this is done with Composite graphs, See Section 9.2 "Using Composite Graphs" for full details.

### **11.1.11. What is a composite graph ?**

A Composite graph is where you have multiple traces in a single graph. In Pressnet you may also combine different TYPES of values in the same graph. An example of a composite graph is shown in Section 9.2 "Using Composite Graphs".

### **11.1.12. How do I use composite graphs ?**

Section 9.2 "Using Composite Graphs" details the steps involved.

### **11.1.13. How do I print a graph to my printer ?**

Once you have the graph on your screen, simply click the "Print" button. Section 9.1 "Graphing Options from an open graph" has more details.

### **11.1.14. Can I save the graph/chart I'm looking at?**

Yes, either as a GIF file (a graphic format) or as a CSV file (a spreadsheet format). Section 9.1 "Graphing Options from an open graph" has more details.

### **11.1.15. Can I export this graph/chart to Excel ?**

Yes. CSV is a format Excel can read.

### **11.1.16. How do I save or Export a graph/chart ?**

Once you have the graph on your screen, simply click the "Save as GIF" or "Export as CSV" button.

You will be prompted for a filename and location to save the file. Section 9.1 "Graphing Options from an open graph" has more details.

#### **11.1.17. How can I change the settings for a controller ?**

Highlight the controller channel you wish to alter, right click the mouse and select "Edit Properties". A dialog box with all appropriate settings appears for you to change the settings. Click on the "Save" button (bottom left) to transfer the settings into the controller. Chapter 10 "Edit Properties: Presscon Settings Screens" has pictures of the various dialog boxes each controller has.

Controllers can also be changed at the keyboard as usual, however Pressnet can only identify that a change has been made and when, not by whom or the changes made. For this reason we recommend putting a user code on the controllers and making all setting changes through Pressnet to ensure they are fully logged.

#### **11.1.18. On site, Off site. What are they, How do I use them ?**

The on site list shows controllers the Pressnet Client can actually communicate with. The On Site list only fills when you are actually CONNECTED. The Off Site list however contains details of controllers which are saved as files on the Pressnet Client. These settings files can be copied to on site controllers if needed to program a replacement controller. Section 6.2 "Functions accessible in Site Explorer" has full details.

#### **11.1.19. What is Site Information ?**

Site information is a collection of useful information about the site which can be edited and saved to the Pressnet Server and to the client for reference. Section 6.11 "Site Information Box " has full details.

#### **11.1.20. How do I set up the Site Layout ?**

It's actually pretty easy but there are a few steps involved. (The steps are covered in full detail in Chapter 8 "Using Pressnet Client –Site Layout."). Basically, you import a background image and then "drag" icons across from the site list (either on site or off site is OK) and place the icons over their required positions.

A great feature of setting up site layouts in Pressnet is you don't have to label the cabinet system descriptions or system numbers on the graphic background. Simply draw boxes where things go. Pressnet will AUTOMATICALLY display the channel descriptions when it connects to the site.

#### **11.1.21. How do I download the Site Layout ?**

If you connect to a site but you don't have the site layout on your computer, don't worry! You simply import the site layout from the server. Section 8.1 "Edit Functions accessed in Site Layout " has full details. You will need access at Supervisor or Administrator level.

#### **11.1.22. How do I create/modify a Site Layout ?**

Section 8.1 "Edit Functions accessed in Site Layout " has full details. You will need access at Supervisor or Administrator level.

#### **11.1.23. Do all Pressnet Client have to have the same Site Layout ?**



Not necessarily, however it is advisable not to do this to avoid confusion.

#### **11.1.24. What are the user levels?**

Administrator (the highest access level), Supervisor 2<sup>nd</sup>, Master 3<sup>rd</sup> and Viewer (lowest). All users who connect to a site (even viewer) must provide a valid user name and password. As you would expect, Viewer access level will only let you view things but not change anything. Section 3.5 "User Access Level " has full details.

#### **11.1.25. Can I make service logs?**

The "Add Note" function in History Logs is included for this very purpose. For completeness, we recommend a note is added by service personnel whenever they make a settings change or visit the site.

#### **11.1.26. How do I best manage passwords and security?**

Where there are multiple sites and multiple users (with different security access levels) Pressnet can provides for centralized management. Following are some guidelines to achieve this.

- Only have a few users with "Administrator" and "Supervisor" Access
- "Master" level access is recommended for general users (e.g mechanics who log in to change settings on Presscon.)
- Have a "reference" Pressnet Client with a "master" password file known to be up to date at all times
- Whenever the master password file is updated, the Administrator logs on to all managed Pressnet Servers and updates the password file.
- The password file ( c:\1pressnet\clientPassword ) can be emailed to all valid users (of Master level and Viewer level) and copied to their Pressnet Client software, over-writing the original clientPassword file. This may be required to update the password file on Pressnet Clients where the user only has Master level access (and cannot therefore change passwords themselves)
- As a user leaves the company, they are promptly deleted from the master password file to prevent access.
- For maximum security the Password file is encrypted therefore does not give users access to the usernames or passwords.

**ALL USERS** at any level are encouraged not to divulge passwords. This will prevent people logging in to Pressnet using different identities.

## 12. Index

---

Administrator, 9  
CaseCon, 25, 28  
Change Card Number, 14, 16, 17  
Change User Level, 11, 13  
Controllers- user access code, 32  
CSV, 23, 31  
Disconnect, 11  
Excel, 18, 31  
Filter Logs, 17, 18  
Get Site Layout, 20  
GIF, 19, 23, 25, 31  
Graphing, 21  
Graphs - Closing, 23, 25  
Graphs - Composite, 31  
Graphs – Composite, 24, 31  
Graphs -printing, 31  
Graphs- saving, 31  
History Logs, 17  
History Logs- change column width, 18  
History Logs- change order, 18  
History Logs- including & excluding, 18  
Hover function, 18  
Icons –adding,moving, changing font size, 19,  
32  
Icons- Colors, 20  
Import, 14, 16  
Internet, 1, 4, 5, 6, 10, 11, 30  
IP, 4, 10, 14  
Isolate/Restore, 20  
ISP, 10, 11  
Java, 5, 6, 15  
LAN, 4, 10  
Linux, 4  
Master, 10  
Modem, 4, 5  
Monitor, 4  
Move controller, 14  
Multi Rack, 1, 25, 26  
Navigation of Site Layout, 20  
On Site, Off Site, 30, 32  
Password, 15, 16, 30, 31  
Password Management, 12, 31, 32, 33  
Passwords, 16  
Phasefale CD, 5, 6  
Ping, 11  
Pressnet Client Software, 4, 5, 12, 18  
Pressnet PC, 4, 5  
Pressnet Server Software, 4  
Print Graph, 23, 25, 31  
Product Probe Simulation, 22  
Rack Control, 1, 19, 27  
scale, 24  
Screen Resolution, 19  
Service Name, 10  
Set Maximum History Logs, 12, 32  
Settings – 8 & 32 Sensor Cards, 29  
Settings – Case Control, 28  
Settings – DDC, 29  
Settings – Multi Rack, 26  
Settings – Rack Control, 27  
Settings - Relay Card, 25  
Settings – Supervisor, 28  
Settings – Syscon, 26  
Site Explorer functions, 12, 32  
Site Information, 32  
Site Information Box, 17, 32  
Site Order in Explorer, 31  
Sites - downloading, 32  
Start Pressnet, 11  
Supervisor, 9  
Syscon, 1, 14, 19, 21, 22, 23, 25, 26  
Unzoom, 23, 25  
User Levels, 33  
Viewer, 9  
Windows – adjusting Size, 8  
Word, 23, 25  
Zoom, 23, 25, 31

*Throughout this manual all Copyrights and Trademarks are the property of their respective owners*

---