

# JOULETEMP

## COOL AND FREEZER ROOM CONTROL

► **Cooling, heating and humidity control with defrost** ◀



► JouleTemp represents a new concept in room controls – full cool room control, alarm and monitoring functions in a standalone control with ethernet communications via your computer's web browser. Includes 2 stages of cooling (with defrost), 2 stages of heating plus humidity control.

- Cooling, heating & humidity\* control
- High-precision temperature sensor included with 0.1°C resolution
- Real-time clock with battery
- Time/date stamped data logging
- PID control option
- Ethernet port & free Modbus TCP
- Designed and manufactured in Australia to international standards
- Alarm buzzer on board
- Major upgrade for TACm installations
- Straight, tilt and panel-mount options
- Door monitor and alarm
- Cryogenic fridges sensor option
- No software to install – browser based
- Colour-coded temperature graphing
- Event log tracks alarms
- Password-protected programming
- Import/export set-up text file



Precision temperature sensor included



*\*humidity sensor optional*

• CONTROL • MONITOR • PROTECT

Designed and manufactured in Australia

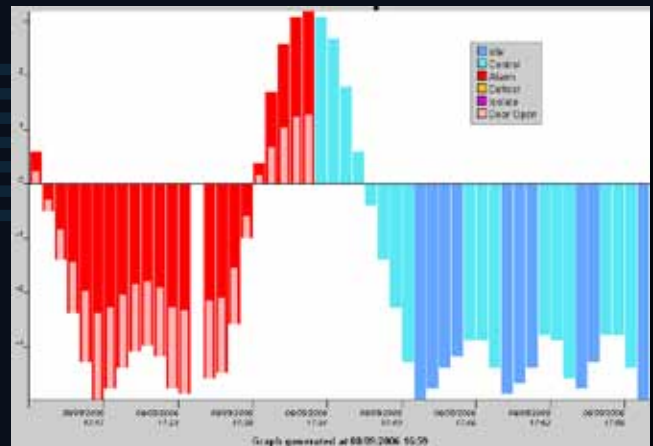
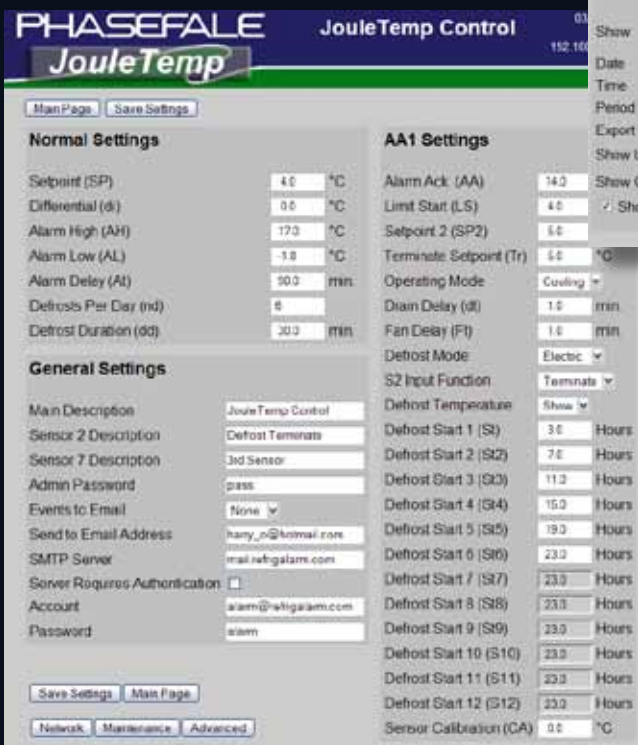
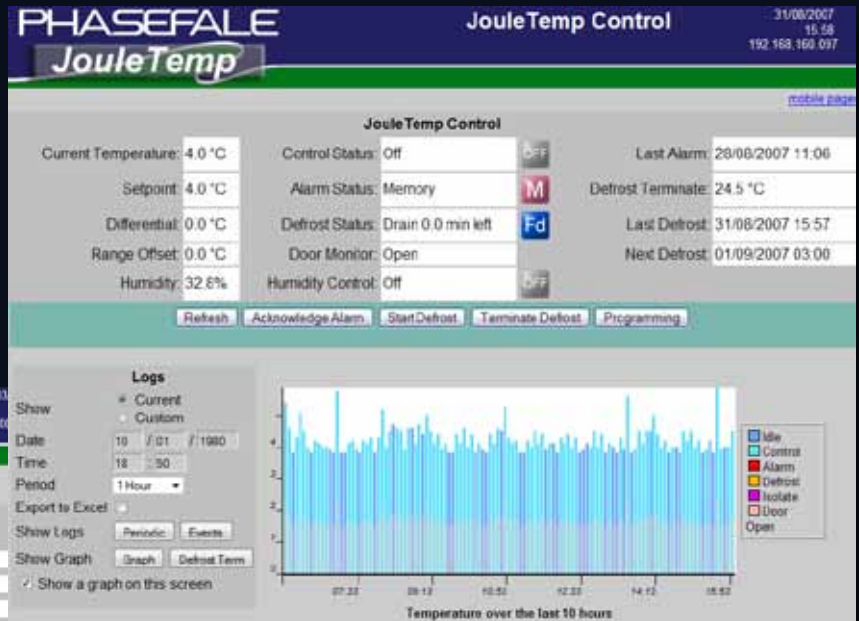


# JOULETEMP

NOT JUST A CONTROL – THE SOFTWARE IS BUILT IN

► The main screen shows control, temperature, alarm and defrost status. The graph is colour-coded to quickly recognise control and alarms etc. Status icons are animated.

▼ One of three programming screens; each is password protected where settings are viewed and/or changed.



Specify a graph by time and date plus duration. The graph includes colour-coded status plus door open or close and a mouse-over display of the data point.

▼ Event logs provide alarm reporting and status. Periodic logs provide CSV data for export.

▼ JouleTemp can also transmit alarms and events via email/SMS\* (\*SMS via email requires paid service)

Date	Time	Event	Temperature	Temp 2	Humidity	Temp 3	Alarm
24/08/2007	16:13:50	Door Monitor (DOR) Changed	-0.2 °C	27.1 °C	34.4%	42.3 °C	Off
24/08/2007	16:13:31	S7 Name Changed	-0.2 °C	27.1 °C	34.4%	42.3 °C	Off
24/08/2007	16:13:30	S2 Name Changed	-0.2 °C	27.1 °C	34.4%	42.3 °C	Off
24/08/2007	14:15:15	Humidity Calibrate Low Changed	1.3 °C	27.0 °C	35.4%	42.2 °C	Off
20/08/2007	14:03:24	Terminate Setpoint (Tr) Changed	5.1 °C	26.7 °C	35.6%	42.2 °C	Off
20/08/2007	14:02:44	Setpoint (SP) Changed	4.8 °C	26.6 °C	35.6%	42.1 °C	Off
20/08/2007	14:02:24	Defrost Initiated	4.7 °C	26.6 °C	35.6%	42.2 °C	Off
20/08/2007	13:53:45	Defrost Duration (dd) Changed	4.4 °C	26.9 °C	35.6%	42.1 °C	Off



## ► Why Phasefale?

Phasefale has been a pioneer and leader in Australian temperature control and alarm systems since 1980. Our range is designed and manufactured in Australia. Call us now to discuss your alarm and control needs.

► Telephone  
+61 3 9584 5590  
► Fax  
+61 3 9584 5356

► Address  
Phasefale Controls Pty Ltd  
83 Taunton Drive  
Cheltenham VIC 3192

► Email  
sales@phasefale.com.au  
► Web  
www.phasefale.com.au

