

JOULEALARM

MULTI-CHANNEL ALARM

► **8 channels for Temperature, Pressure and Humidity with control functions and multiple alarm output options including Email** ◀



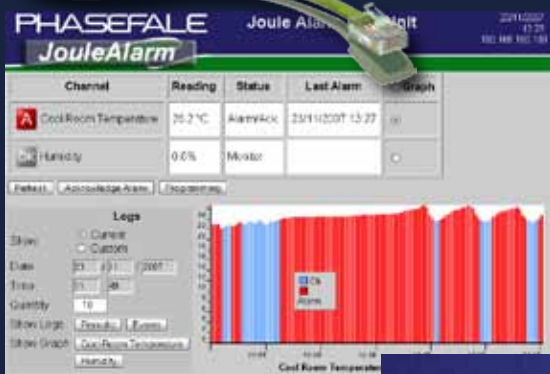
► The JouleAlarm is a multi-channel alarm and monitoring unit which can accept temperature, pressure, switch contact and humidity inputs. It includes built-in browser-based software, data logging and an ethernet port. JouleAlarm is the perfect monitoring solution for many environmental alarm-monitoring and control requirements. It also includes 3 control channels for basic on/off control as required.

► Features:

- Total 8 alarm inputs + 1x humidity alarm
- 8 temp, 4 pressure, 8 contact channels
- 1x control output
- 2x optional control outputs
- Real-time clock with battery
- Time/date stamped data logging
- JouleConnect software option
- Alarm buzzer on board
- Straight, tilt and panel-mount options
- Email, SMS* and dial-out alarm options
- No software to install – browser based
- Colour-coded graphing
- Event log tracks alarms
- Password protected
- Import/export set-up and data logs

Temperature, pressure, humidity sensors not included.

*SMS requires paid email service



• CONTROL • MONITOR • PROTECT

Designed and manufactured in Australia



N757

JOULEALARM

NOT JUST AN ALARM – THE SOFTWARE IS BUILT IN

The main screen shows channel status. The automatic graph is colour coded to quickly recognise alarms etc. Status icons are animated. Any used channel can be graphed or data exported.



The program page is password protected where settings are viewed and/or changed.

Normal Settings

Channel	Description	Function	Alarm High	Alarm Low	Alarm Delay
Channel 1	Cool Room Temperature	Temperature Alarm	24.5 °C	-5.0 °C	0.2 min
Channel 2	Produce Coolroom	Temperature Monitor			
Channel 3	Fruit & Veg Coolroom	Temperature Monitor			
Channel 4	Freezer Room	Temperature Monitor			
Channel 5	Blain Box	Temperature Monitor			
Channel 6	Door Switch	Normally Open			0.1 min
Channel 7	Rack Suction Pressure	LP Monitor			
Channel 8	Rack Condenser Pressure	HP Monitor			

AA Settings

General Settings

Main Description: Joule Alarm Test Unit
 Admin Password: pass
 Events to Email: All
 Send to Email Address: ben.redby@gmail.com
 SMTP Server: 192.168.160.2
 Server Requires Authentication:
 Account: sales@phasefale.com.au
 Password: *****

Alarm Ack. (AA): 990 min.
 Temperature Units: Celsius
 Pressure Units: psi
 Date Display: dd/mm/yyyy
 Log Period (LOP): 1 min.
 Enable Time and Date Change:
 Time (24hr min): 13 04
 Date (dd/mm/yyyy): 23/11/2007
 Network IP: 192.168.158.180
 Gateway IP: 192.168.158.881
 Humidity Function: Monitor
 Humidity Alarm: High (HAH): 01 %RH
 Humidity Alarm: Low (HAL): 20 %RH
 Humidity Alarm: Delay (HAD): 0.2 min.
 Buzzer Function: Not Used

Precision temperature sensors sold separately



Event logs provide exception reporting. Periodic logs can be exported to Excel.

Date	Time	Event	Cool Room Temperature	Produce Coolroom
23/11/2007	13:23:45	Alarm End	24.4 °C OK	1.3°C Monitor
23/11/2007	13:12:51	Alarm Ack.	25.8 °C ALARM	1.3°C Monitor
23/11/2007	13:10:09	Alarm Start	24.6 °C ALARM	1.3°C Monitor
23/11/2007	13:06:39	Alarm End	24.4 °C OK	1.3°C Monitor
23/11/2007	12:51:58	Alarm Ack.	24.6 °C ALARM	1.3°C Monitor
23/11/2007	12:51:45	Alarm Start	24.6 °C ALARM	1.3°C Monitor
23/11/2007	12:49:45	Alarm End	24.3 °C OK	1.3°C Monitor
23/11/2007	12:36:17	Humidity Function Changed	25.6 °C ALARM	1.3°C Monitor
23/11/2007	12:36:16	Alarm Ack. (AA) Changed	25.6 °C ALARM	1.3°C Not Used
23/11/2007	12:36:15	Alarm Function 8 (AF8) Changed	25.6 °C ALARM	1.3°C Not Used

Transmit alarms & events via email/SMS



► Why Phasefale?

Phasefale has been a pioneer and leader in Australian temperature control and alarm systems since 1980. Our range is designed and manufactured in Australia. Call us now to discuss your alarm and control needs.

► Telephone
+61 3 9584 5590
► Fax
+61 3 9584 5356

► Address
Phasefale Controls Pty Ltd
83 Taunton Drive
Cheltenham VIC 3192

► Email
sales@phasefale.com.au
► Web
www.phasefale.com.au

